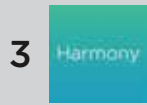


- 1 Unplug the Hub's power cable. Plug the Extender into the Hub.
- 2 Place the Extender underneath the Hub and connect the power cable.
- 3 Install the latest Harmony app. Select Menu/Harmony Setup/Add Home Hub Extender.



- 1 Débranchez le Hub du secteur. Branchez l'extension sur le Hub.
- 2 Placez l'extension sous le Hub et branchez le cordon électrique.
- 3 Installez l'application Harmony. Sélectionnez Menu/Installation Harmony/Ajout Extension Home Hub.

For step by step instructions visit:
 Pour des instructions pas à pas, visitez la page:
support.myharmony.com/home-hub-extender

COLOR SPECIFICATIONS

BRAND / LAUNCH: Logitech 2014
 PROJECT TITLE: MOOSEHEAD
 Harmony Home Hub Extender
 DETAILS: AMR Box

SPOT COLORS

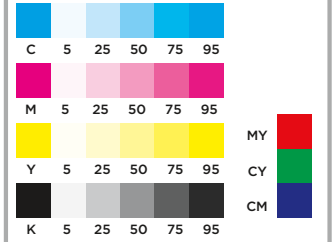
PMS 427 C

EFFECTS

DIE LINE COLOR (NO PRINT)

DIE LINES

PROCESS COLORS



SPECIFICATIONS / NOTES:

Final files to print.
 Please print PMS colors prior to process
 MODIFICATION DATE: November 18, 2014

PRINTING QUALITY MUST COMPLY WITH
 LOGITECH INSPECTION CRITERIA OF PRINTING
 AND PACKAGING MATERIALS (WWP-751481-0000.003)

DIELINE NAME:

PAPER:

THIS PRINT SIZE / SCALE:
 100% of original

Designer: Logitech
 Location: Newark, CA
 PrePress: ColorONE 13668

