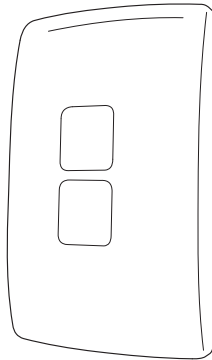




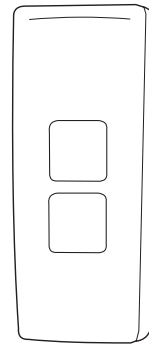
GoControl™

WA00Z-1

**Z-Wave Radio Frequency (RF) Controlled
 Scene and NWI Capable, Wall Mounted Switch, Series 500**



Shown with single-gang trim plate



Shown with multi-gang trim plate

NOTE: This unit must be added to the Network **only where it will be permanently installed.** The proper operation of this node in the mesh network is dependent on it knowing its location with respect to other nodes. You cannot "test bench" configure this unit, then install.

WA00Z-1 WALL MOUNTED SWITCH

The GoControl™ family Z-Wave® certified wireless lighting products (smart LED bulbs, switches, dimmers, outlets, and plug-in modules), security devices (alert sounder, passive infrared sensor and door/window transmitter) and Control products (Garage Door and thermostats) bring a new level of intelligent wireless capability to commercial and residential environments. The Z-Wave wireless protocol is an international wireless standard for remote home automation, security and other applications. Embedded in each device, the Z-Wave smart chip enables two-way RF communication among hundreds of Z-Wave enabled devices, allowing products and services from multiple manufacturers to work seamlessly. The WA00Z-1 Wall Mounted Switch is simple to set up and can be installed anywhere to operate other load bearing Z-Wave devices.

GoControl Z-Wave products are easy to install, and allow dealers to create an integrated wireless network with nearly limitless expansion and interoperability with security, energy management, home entertainment, appliances, and more.

For indoor use only. Retain instructions for future use.

Z-WAVE PLUS FEATURES

The WA00Z-1 contains a Z-Wave 500 Series Module that supports Z-Wave Plus® features. A Z-Wave certified portable or stationary Controller can communicate with the Z-Wave 500 Series Module.

Depending on the capability of the Controller or gateway software, the following operations can be performed with the WA00Z-1. Refer to the Controller or gateway manual for details.

- Turn the Associated device ON and OFF.
- Dim the Associated device.
- Add or Remove the WA00Z-1.
- Over-the-air firmware update by the gateway (if the gateway has the OTA function) or static Controller.
- Lifeline function which automatically notifies the Associated modules and the network that a manually reset device is no longer in the network, thus, the corresponding Association becomes invalid.

INSTALLATION

The WA00Z-1 can be installed anywhere, adding a switch where it is most convenient.

The WA00Z-1 can be installed without any screws by using the included double sided tape. In some cases, mounting screws can be used to secure the WA00Z-1 over an existing wall switch.

Activate the two CR2032 lithium coin cell batteries in the battery compartment in the WA00Z-1 main unit by removing the two battery pull tab strips.

Once the batteries are activated, select the proper faceplate to be used for WA00Z-1. Use the wider faceplate to cover a single gang wall switch. Use the narrower faceplate when used on a multi-gang wall switch.

Installation with double sided tape

Install the WA00Z-1 with the included double sided tape as follows.

1. Snap on the faceplate on the WA00Z-1 so that the two buttons are flush with the surface of the faceplate.
2. Place the double sided tapes in the 4 corners on the back side of WA00Z-1 main unit as shown.
3. Attach the WA00Z-1 on top of the existing wall plate. Position the WA00Z-1 properly over the switch (the battery compartment should be on the bottom side and existing wall switch should be in ON position). Make sure the surface is clean and dry before securing.
4. Secure the WA00Z-1 tightly by pressing firmly on the existing wall plate



Installation with Mounting Screws

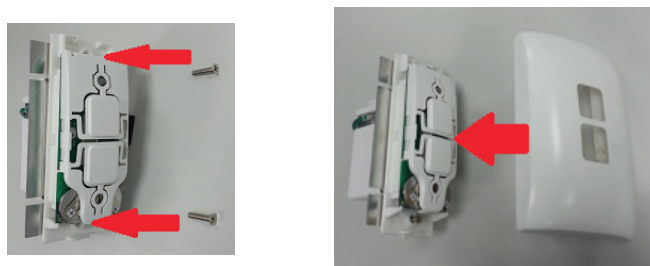
If your existing light switch is a decorator type or toggle switch with screw holes that line up with WA00Z-1, you may secure the WA00Z-1 using two screws.

Installation on a Single-gang Switch

1. Remove the mounting screws on the existing wall plate
2. Remove the existing wall plate from the in-wall switch.
3. Place the bottom case of WA00Z-1 on the in-wall switch. **Make sure the existing switch is in the ON position.**

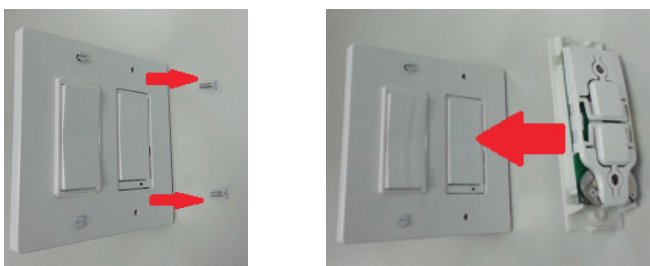


4. Tighten the mounting screws and secure the bottom case of WA00Z-1
5. Place the wider faceplate on the WA00Z-1 main unit.

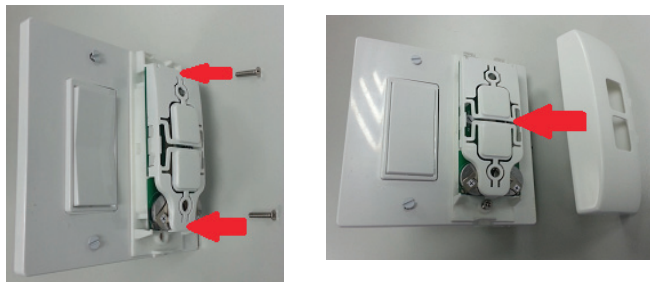


Installation on a Multi-gang Switch

1. Remove the mounting screws on the existing wall plate that you wish to cover (do NOT remove the screws on other switch nor the wall plate).
2. Place the WA00Z-1 main unit on top of the existing faceplate. **Make sure the existing switch is in ON position.**



3. Secure the WA00Z-1 main unit to the existing wall plate using the included longer mounting screws.
4. Snap on the narrower faceplate on the WA00Z-1. Make sure the two buttons are flush with the surface of the faceplate.



IMPORTANT NOTE:

Please note that it is extremely important to follow the installation procedure to have WA00Z-1 operate properly with your home gateway. Installation of WA00Z-1 ensures that the power to the Z-Wave device always remains ON. Without the electrical power to the Z-Wave device, it cannot be turned ON remotely nor function as a signal repeater to maintain proper Z-Wave network.

PROGRAMMING

Adding to a network:

Refer to your Controller operating instructions to add this switch under the command of the Wireless Controller.

1. With your Controller in Discovery or Add Mode, press either button on the WA00Z-1. The green LED should flash twice.
2. You should see an indication on your Controller that the “device was added” to the network.
3. The device will appear in the list of Switches. It should display as a switch.

✓ **NOTE:** If the Controller/Gateway shows the addition failed or the WA00Z-1 LED flashed red, repeat Steps 1-3.

✓ **NOTE:** If you have trouble adding the WA00Z-1 to a group it may be that the Home ID and Node ID were not cleared from it after testing. You must first “RESET UNIT” to remove it from the network. Although adding it to a group includes it in the network, removing it from a group does not remove it from the network. If removed from a group, it functions as a repeater (only). “RESET UNIT” removes it completely from the network.

To Reset Unit (If Required):

In the event that your primary Controller is lost or otherwise inoperable, to reset the WA00Z-1 and clear all network information, follow these steps:

1. Press the top switch five times and then press the bottom switch five times within five seconds.
2. The LED will flash seven times to indicate that a Reset is taking place.

Removing from a network:

The WA00Z-1 can be removed from the network by the Controller/Gateway. Refer to the Controller operating instructions for details.

1. Set the Controller into Removal Mode and follow its instruction to delete the WA00Z-1 from the Controller.
2. Remove the switch by pressing either button on the WA00Z-1. The LED will flash twice indicating that it has been removed.
3. You should see an indication on your Controller that the “device was removed” from the network.

BASIC OPERATION

Switches

The paddle on the WA00Z-1 allows the user to:

- Turn the Associated devices on or off.
- Tapping top of switch turns the Associated device ON.
- Tapping bottom of switch turns the Associated device OFF.

Dimmers

The paddle on the WA00Z-1 allows the user to:

- Dim the Associated devices.
- Press and Hold the top of switch to increase the intensity of the Associated device.
- Press and Hold the bottom of switch to decrease the intensity of the Associated device.
- Tapping top of switch turns the Associated device ON to the previously set level.
- Tapping bottom of switch turns the Associated device OFF.

Remote Control

The WA00Z-1 will respond to BASIC and BINARY commands that are part of the Z-Wave system. Refer to your Controller's instructions as to whether your Controller can transmit those commands.

Associations

The WA00Z-1 can either control other devices or it can issue various scene activation commands to a central controller via Associations Operation. For direct device control, follow these steps.

1. Include your Z-Wave outlet, fixture, or bulb into the network by following the controller and Z-Wave device instructions.
2. Place your controller in ASSOCIATION mode with Group 2 or Group 3, and set the WA00Z-1 as SOURCE. Depending on the Controller software, Association may be referred to as Smart Apps ("If / Then" type conditions, etc.)
3. Switch the Z-Wave device OFF and then ON for setting the device as a DESTINATION.
4. The LED will flash twice when it is successful.

Turn ON

- Press and release the top button, Z-Wave devices in Association Group 2 will be turned ON.
- Press and release the top button twice (double click), Z-Wave devices in Association Group 3 will be turned ON.

Turn OFF

- Press and release the bottom button. Z-Wave devices in Association Group 2 will be turned OFF.
- Press and release the bottom button twice (double click). Z-Wave devices in Association Group 3 will be turned OFF.

Dim UP

- Press and hold the top button. Z-Wave devices in Association Group 2 will dim up.
- Press the top button twice while holding down the button in 2nd press. Z-Wave devices in Association Group 3 will dim up.

Dim DOWN

- Press and hold the bottom button. Z-Wave devices in Association Group 2 will dim down.
- Press the bottom button twice while holding down the button in 2nd press. Z-Wave devices in Association Group 3 will dim down.

- ✓ **NOTE:** You can set the Z-Wave devices into Association Group 2 or Association Group 3. Maximum of five Z-Wave devices can be added in each group.

CONFIGURATION

The WA00Z-1 supports the Configuration command.

The WA00Z-1 can be configured to operate slightly differently than how it works when you first install it. Using the configuration command you can change operational characteristics.

Activation of Central Scene

Z-Wave Plus introduces a new process for scene activation – "Central Scene Control". Press and release the button, it will send a certain command to the central controller via the lifeline association group 1. This allows the controller to react to both a button press and a button release. This mode implements communication pattern 6, and requires a gateway supporting Z-Wave Plus.

Parameter	Length	Valid Values	Configuration Option	
			Top Button Scene Number	Bottom Button Scene Number
1	1 Byte	0 (default)	1	2
		1	3	4
		2	5	6
		3 to 98	7, 9, 11, 13, etc.	8, 10, 12, 14, etc.
		99	199	200

Control Mode

You can set the WA00Z-1 to control other devices or issue various scene activation commands to a central controller.

Parameter	Length	Valid Values	Configuration Option
2	1 Byte	0	WA00Z-1 can activate the Scene which is pre-set by Gateway, and then control the associated Smart Bulbs in either Group 2 or Group 3 (default mode)
		1	WA00Z-1 can only activate the Scene which is preset by the Gateway
		2	WA00Z-1 can only control Smart Bulbs in Association Group 2 and Group 3

Invert Switch

To change the top of the switch to OFF and the bottom of the switch ON, set Parameter 4 to a value of 1.

Parameter	Length	Valid Values	Configuration Option
4	1 Byte	0	Top of switch is ON, bottom of switch is OFF (default)
		1	Bottom of switch is ON, top of switch is OFF

Over-The-Air (OTA) Update

Press and hold the any button of WA00Z-1, and enable the OTA mode in the system Controller, update the firmware by OTA. Release the button and the Controller will send the update firmware to WA00Z-1.

Resetting to Defaults

Each configuration Parameter can be set back to its default setting by setting the default bit in the Configuration Set command. See your Controller's instructions on how to do this (and if it supports it). All configuration commands will be reset to their default state.

SPECIFICATIONS

Power: Two (2) CR2032 Lithium Coin Cell Batteries
Signal (Frequency): 908.4 MHz / 916 MHz
Maximum Load: None
Range: Up to 130 feet line of sight

Z-Wave® and Z-Wave Plus® are registered trademarks of Sigma Designs and its subsidiaries in the United States and other countries.

REGULATORY INFORMATION

The WA00Z-1 is certified to comply with applicable FCC and IC rules and regulations governing RF and EMI emissions.

This device complies with part 15 of the FCC Rules. Operation is subject to the following two conditions: (1) This device may not cause harmful interference, and (2) This device must accept any interference received, including interference that may cause undesired operation.

FCC Notice

This equipment has been tested and found to comply with the limits for a Class B digital device, pursuant to Part 15 of the FCC Rules. These limits are designed to provide reasonable protection against harmful interference in a residential installation.

This equipment generates, uses, and can radiate radio frequency energy and, if not installed and used in accordance with the instructions may cause harmful interference to radio communications. However, there is no guarantee that interference will not occur in a particular installation. If this equipment does cause harmful interference to radio or television reception, which can be determined by turning the equipment off and on, the user is encouraged to try to correct the interference by one or more of the following measures:

- Reorient or relocate the receiving antenna.
- Increase the separation between the equipment and receiver
- Connect the equipment into an outlet on a circuit different from that to which the receiver is connected
- Consult the dealer or an experienced radio/TV technician to help.
- Changes or modifications not expressly approved by the party responsible for compliance could void the user's authority to operate the equipment

IC Notice

This Class B digital apparatus complies with Canadian ICES-003

Cet appareil numérique de la classe B est conforme à la norme NMB-003 du Canada. Le présent appareil est conforme aux CNR d'Industrie Canada applicables aux appareils radio exempts de licence. L'exploitation est autorisée aux deux conditions suivantes : (1) l'appareil ne doit pas produire de brouillage, et (2) l'utilisateur de l'appareil doit accepter tout brouillage radioélectrique subi, même si le brouillage est susceptible d'en compromettre le fonctionnement.

This device complies with the Industry Canada license exempt RSS standard(s). Operation is subject to the following two conditions: (1) this device may not cause interference, and (2) this device must accept any interference, including interference that may cause undesired operation of the device.

WARRANTY

This Nortek Security & Control product is warranted against defects in material and workmanship for twelve (12) months. **This warranty extends only to wholesale customers** who buy direct from Nortek Security & Control or through Nortek Security & Control's normal distribution channels. **Nortek Security & Control does not warrant this product to consumers.** Consumers should inquire from their selling dealer as to the nature of the dealer's warranty, if any. **There are no obligations or liabilities on the part of Nortek Security & Control for consequential damages arising out of or in connection with use or performance of this product or other indirect damages with respect to loss of property, revenue, or profit, or cost of removal, installation, or re-installation.** All implied warranties, including implied warranties for merchantability and implied warranties for fitness, are valid only until Warranty Expiration Date as labeled on the product. **This Nortek Security & Control LLC Warranty is in lieu of all other warranties express or implied.**

All products returned for warranty service require a Return Product Authorization Number (RPA#). Contact Nortek Security & Control Returns at 1-855-546-3279 for an RPA# and other important details.

IMPORTANT !!!

Radio controls provide a reliable communications link and fill an important need in portable wireless signaling. However, there are some limitations which must be observed.

- For U.S. installations only: The radios are required to comply with FCC Rules and Regulations as Part 15 devices. As such, they have limited transmitter power and therefore limited range.
- A receiver cannot respond to more than one transmitted signal at a time and may be blocked by radio signals that occur on or near their operating frequencies, regardless of code settings.
- Changes or modifications to the device may void FCC compliance.
- Infrequently used radio links should be tested regularly to protect against undetected interference or fault.
- A general knowledge of radio and its vagaries should be gained prior to acting as a wholesale distributor or dealer, and these facts should be communicated to the ultimate users.

**NORTEK**
SECURITY & CONTROL
USA & Canada (800) 421-1587 & (800) 392-0123
(760) 438-7000 - Toll Free FAX (800) 468-1340
www.nortekcontrol.com