

AMADAS Lever Lock

User and Reference Guide

ADSL - 1001

AMADAS

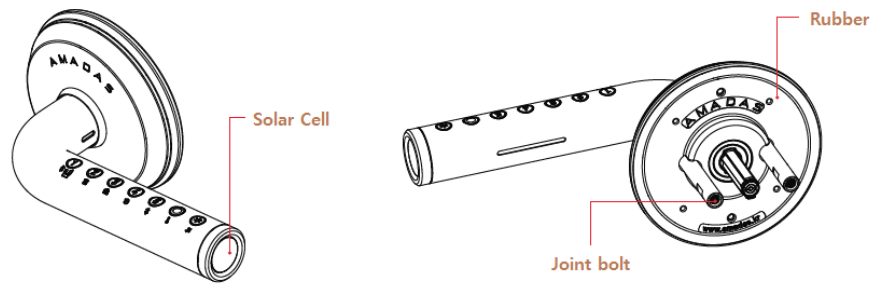
VER 1.3

AMADAS Lever Lock

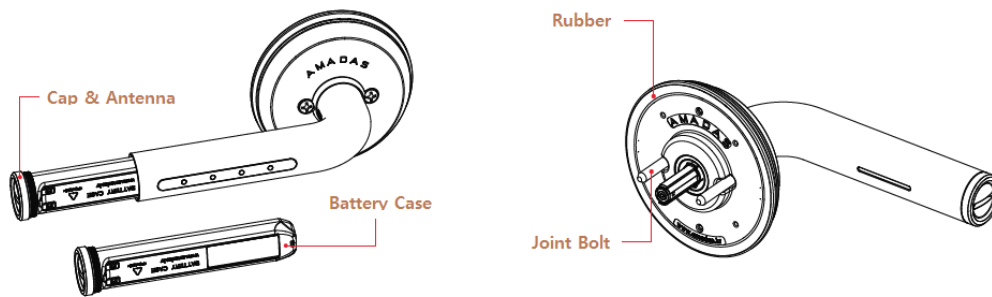
User and Reference Guide

1. Product composition

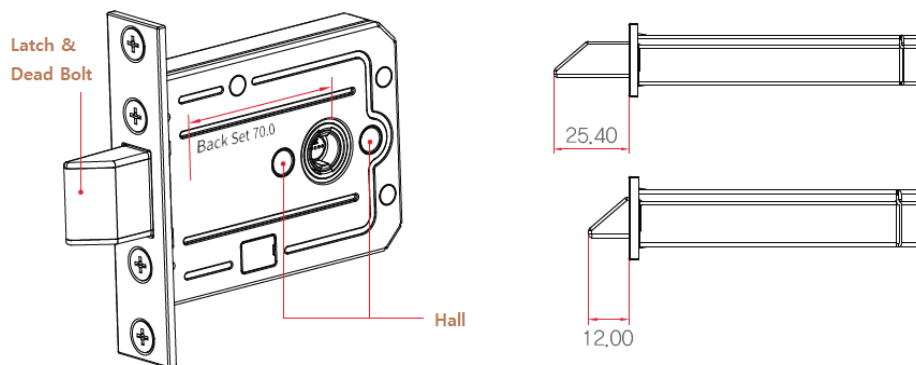
Outer Lever



Inner Lever



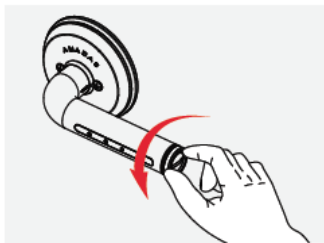
Mortise Assembly



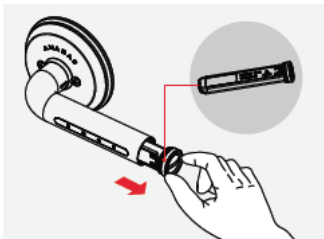
2. Product Specifications

Item	Specification
Exterior Unit Size	D(18.0cm), W(12.5cm), H(9cm), Weight(0.47kg)
Interior Unit Size	D(18.4cm), W(12.5cm), H(9cm), Weight(0.47kg)
Power	2 LR06 AA Alkaline 1.5V Batteries
Emergency Power	Solar Charge 2.7V
Door Thickness Range	30~90mm
Door Knob Hole Diameter Range	45~70mm
Exterior Material	Full Stainless Steel & Pipe

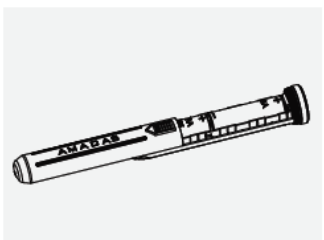
3. Battery Change



- 1 Turn the battery cap on the Inner lever counterclockwise. (Use a coin if it does not open well.)

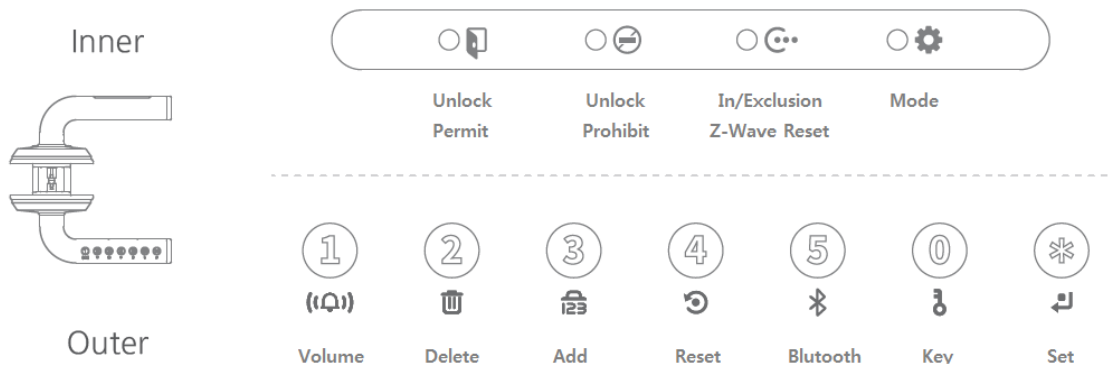


- 2 Remove the battery case cover after removing it from the lever.



- 3 Insert the battery according to the +, - polarity marked inside the battery case and close the cover.
- 4 When installing into the lever, turn it clockwise and tighten it with a coin. Please be careful that leakage or rupture may occur in the battery station.

4. Button Functionality



A. Inner Lever Button

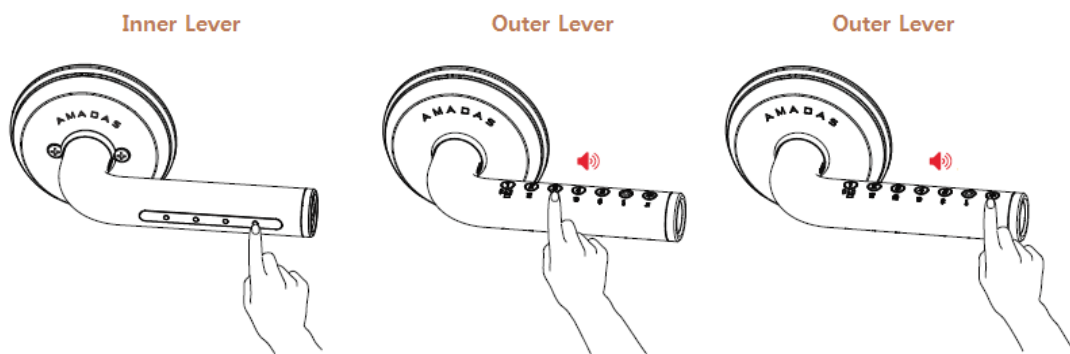
- i. Unlock permission : Set (or Reset) unlock permission (long push for 3secs, toggle status)
- ii. Unlock prohibition : Set (or Reset) unlock prohibition (long push for 3secs, toggle status)
- iii. Inclusion / Exclusion / Z-Wave Reset
 - Inclusion / Exclusion : Set inclusion or exclusion (long push for 3secs, toggle status)
 - Z-Wave reset : Z-Wave locally reset (push 3 times fast)

B. Outer Button

- i. Volume : Set buzzer volume up and down
- ii. Delete : Delete master password
- iii. Add : Add or fix master password
- iv. Reset : Set factory default reset
- v. BLE : Connect to BLE in Smart phone application
- vi. Key : Use the stick key to open the door (Optional master key)
- vii. Mode : Use it to set all outer button functions

5. How to set function

A. Set up master password



- i. Press “Mode” button in the inner lever for 3 seconds.
- ii. Press “Add” button in the outer lever.
- iii. Enter master password (6~12 digits) and press the “*” button.
- iv. Re-Enter master password and press the “*” button.

* The master key is only manually added.

* Default master key is '123450'

B. Delete master password

- i. Press “Mode” button in the inner lever for 3 seconds.

- ii. Press “Delete” button in the outer lever.
- iii. Enter your master password and press the “*” button.
 - * The master key is only manually deleted.
- C. Factory default setting
 - i. Press “Mode” button in the inner lever for 3 seconds.
 - ii. Press “Reset” button in the outer lever.
 - iii. Enter “1004” and press the “*” button.
- D. Buzzer volume
 - i. Press “Mode” button in the inner lever for 3 seconds.
 - ii. Press “Volume” button in the outer lever.
 - iii. Press up (button No.4) or down (button No.5) and press the “*” button.
- E. Set(or Reset) unlock prohibition
 - i. Press “Unlock prohibit” button in the inner lever for 3 seconds. (toggle status)
- F. Set(or Reset) unlock permission
 - i. Press “Unlock permit” button in the inner lever for 3 seconds. (toggle status)
- G. Z-Wave inclusion
 - i. Press “In/Exclusion” button in the inner lever for 3 seconds. (toggle status)
 - ii. Then “Blue LED” will turn on.
 - iii. When the inclusion is complete, the led is turned off and the beep sounds. Please wait.
 - * Beep Success : PiRiRiRi~, Beep Fail : Piriri Priri
 - * The inclusion results can be found in the controller or in your app.
- H. Z-Wave exclusion
 - i. Press “In/Exclusion” button in the inner lever for 3 seconds. (toggle status)
 - ii. Then “Blue LED” will turn on.
 - iii. When the exclusion is completed, the led is turned off and the beep sounds. Please wait.
 - * Beep Success : PiPi, Beep Fail : Piriri Priri
 - * The exclusion results can be found in the controller or in your app.
- I. Z-Wave device reset locally
 - i. Press “In/Exclusion” button in the inner lever 3 times within 1.5 seconds.
 - ii. Then “White LED” will turn on.
 - iii. When the inclusion is complete, the led is turned off. Please wait.

* Please use this procedure only when the network primary controller is missing or otherwise inoperable.

6. Z-Wave Specifications

A. Command Class Support

- i. Mandatory CC Support
 - Z-Wave plus info (V2)
 - Manufacturer specific (V2)
 - Security (V1)
 - Device reset Locally (V1)
 - Battery (V1)
 - Power level (V1)
 - Version(V2)
 - Door Lock (V2)
 - User Code (V1)
 - Association (V2)
 - Association Group Info (V1)
- ii. Recommended CC Support
 - Notification (V4)
 - Configuration (V1)
 - Firmware update meta data (V2)

7. Details of Support Command Class

A. Z-Wave plus info (V2)

- i. Z-Wave Plus Version : 02
- ii. Role Type : Listening Sleeping Slave (LSS)
- iii. Node Type : Z-Wave Plus Node

B. Manufacturer Specific (V2)

- i. Manufacturer ID : 029F
- ii. Product Type ID : 0x0003
- iii. Product ID : 0x0001

C. Version (V2)

- i. Z-Wave Library Type : 0x03
- ii. Z-Wave Protocol Version : 0x04

- iii. Z-Wave Protocol Sub Version : 0x26
 - iv. Firmware 0 Version : 0x01
 - v. Firmware 0 Sub Version : 0x0C
 - vi. Hardware Version : 0x01
- D. Door Lock (V2)
- i. Only support “Unsecure(0x00)” : After 5 seconds after unlock, auto lock is always done.
- E. User Code (V1)
- i. Lock will accept maximum 8 pin codes that art 4~10 digits in length.
 - Supported users : 8
 - User Type : Pin code, Ble, Stick Key
 - Ble, Stick Key : Can not be registered through Z-Wave
 - ID Range
 - Pin code : 0x02~0x08 (0x01 is Master Password)
 - Stick Key : 0x00
 - Ble : 0x11 ~ 0x15
- F. Association (V2) & Association Group Information (V1)
- i. Lifeline between controller and amadas smart lever lock
 - ii. Supported command classes
 - Battery report
 - Doorlock operation report
 - Notification report
 - User code report
 - Device reset locally notification
 - iii. Maximum supported node is 1EA
- G. Configuration (V1)
- i. It is used to enable / disable the Notification function related to Door Open.
 - Parameter Number (1byte) : 0x01
 - Default (1bit) : 0x00
 - Reserved (4bit) : 0x00
 - Size (3bit) : 8bit(0x01)
 - Configuration Value 1 (1byte) : Door open notification On(0x01), Door open notification Off (0xFE)

H. Notification (V4) : Described in below.

8. Details of Notifications

A. Battery replacement notice : Notify if battery is less than 10%.

i. NOTIFICATION_REPORT

- Notification Status (1byte) : Unsolicited messages(0xFF)
- Notification Type (1bytes) : Power Management(0x08)
- Event (1byte) : Replace battery now(0x0B)

B. User Access code exceeds code limit notification (If the password entry error occurs four times)

i. NOTIFICATION_REPORT

- Notification Status (1byte) : Unsolicited messages(0xFF)
- Notification Type (1bytes) : Access Control(0x06)
- Event (1byte) : Manually Enter user Access code exceeds code limit (0x13)

C. RF Unlock operation notification

i. NOTIFICATION_REPORT

- Notification Status (1byte) : Unsolicited messages(0xFF)
- Notification Type (1bytes) : Access Control(0x06)
- Event (1byte) : Auto Lock Locked Operation(0x09), RF Unlock Operation(0x04)

D. Pin code Unlock operation notification

i. NOTIFICATION_REPORT

- Notification Status (1byte) : Unsolicited messages(0xFF)
- Notification Type (1bytes) : Access Control(0x06)
- Event (1byte) : Auto Lock Locked Operation(0x09), Keypad Unlock Operation(0x06)
- Event Parameter 1 (1byte) : Stick key(0x00), Master Password(0x01), Family Password(0x02~0x05), Temporary Password(0x06~0x08), Un-Known(0x09)

E. Internal door open notification

i. NOTIFICATION_REPORT

- Notification Status (1byte) : Unsolicited messages(0xFF)
- Notification Type (1bytes) : Access Control(0x06)
- Event (1byte) : Closed(0x17), Manual Unlock Operation(0x02)

F. Door status notification

i. NOTIFICATION_REPORT

- Notification Status (1byte) : Unsolicited messages(0xFF)

- Notification Type (1bytes) : Access Control(0x06)
- Event (1byte) : Open(0x16), Closed(0x17)

9. Door lock operation & status report

A. Door lock status report

i. DOOR_LOCK_OPERATION_REPORT

- Door Lock Mode (1byte) : DOOR_MODE_UNSEC(0x00), DOOR_MODE_SECURED(0xFF)
- Door Handles Mode (1byte) : Outside(Active:0x10, Inactive:0x00), Inside(Active:0x01)
- Door Condition (1byte) : Bit(0)-Door Open(0x00), Door Closed(0x01)
 Bit(1)-Bolt Locked(0x00), Bolt Unlocked(0x02)
 Bit(2)-Latch Open(0x00), Latch Closed(0x04)
 Bit(3~7)-Reserved
- Lock Timeout Minutes : No unlocked period(0xFE)
- Lock Timeout Seconds : No unlocked period(0xFE)

ii. BATTERY_REPORT

- Battery Level(1byte) : FULL(0x64), HIGH(0x10), LOW(0x00), DEAD(0xFF)

B. Unlock RF(Z-Wave) operation

i. DOOR_LOCK_OPERATION_SET

- Door Lock Mode (1byte) : DOOR_MODE_UNSEC(0x00)
- * AMADAS Lever lock is not support “DOOR_MODE_SECURED(0xFF)”

ii. NOTIFICATION_REPORT

- Notification Status (1byte) : Unsolicited messages(0xFF)
- Notification Type (1bytes) : Access Control(0x06)
- Event (1byte) : Auto Lock Locked Operation(0x09), RF Unlock Operation(0x04)

C. Add/delete Family password and Temporary password

i. USER_CODE_SET

- User Identifier (1byte) : Family Id Only (0x02~05:Family Id)
- User ID Status (1byte) : USER_ID_AVAILABLE(0x00), USER_ID_OCCUPIED(0x01), USER_ID_RESERVED(0x02), USER_ID_NO_STATUS (0xFE)
- User Code (12bytes) : 4 ~10 digits (Available number – ‘0’, ‘1’, ‘2’, ‘3’, ‘4’, ‘5’)
- * Master Id(0x01) can not be controlled.

ii. NOTIFICATION_REPORT

- Notification Status (1byte) : Unsolicited messages(0xFF)

- Notification Type (1byte) : Access Control(0x06)
- Event (1byte) : Single user code deleted(0x0D), New user code added(0x0E)