



Z-Wave Module 2

# Contents

Network Inclusion .....	4
Network Exclusion .....	5
Conexis L1 .....	6
Inserting the module .....	6
Add Mode .....	8
Remove Mode .....	9
Local Reset.....	10
Keyless Connected .....	11
Inserting the Module ...	11
Add Mode .....	13
Remove Mode .....	14
Reset locally .....	15
Keyfree Connected.....	16

Inserting the Module ...	16
Add Mode .....	18
Remove Mode .....	19
Reset locally .....	20
Help & Support .....	21

## **Network Inclusion**

*This product can be added and operate in any compatible Z-Wave network. All non-battery operated nodes within the network will act as repeaters regardless of vendor to increase reliability of the network*

*For details on adding your smart lock to the network, please go to the following pages:*

*Conexis L1: 8*

*Keyless Connected: 13*

*Keyfree Connected: 18*

## **Network Exclusion**

Your lock must be removed from any existing Z-Wave network before being added into a new Z-Wave network. This can be done either through the remove mode or by a local reset.

*For details on removing your smart lock from the network, please go to the following pages:*

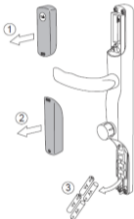
*Conexis L1: 9*

*Keyless Connected: 14*

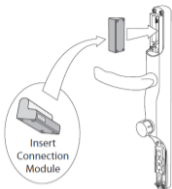
*Keyfree Connected: 19*

# Conexis L1

## *Inserting the module*



Remove the batteries



*Insert the radio module*



*Re-insert the batteries*

## ***Add Mode***

Put the Z-Wave controller into **add** or **learn** mode

Press the R button on the lock 3 times quickly (within 1.5 seconds)

Refer to the operation manual of the Z-Wave controller to complete the learn in process

For more information on this please visit:

*[www.yale.co.uk/smart-living](http://www.yale.co.uk/smart-living)*



## ***Remove Mode***

Put the existing Z-Wave controller into **Remove Mode**

Press the R button on the lock 3 times quickly (within 1.5 secs)

The lock is now ready to be added to a new Z-Wave controller

For more information on this please visit:

*[www.yale.co.uk/smart-living](http://www.yale.co.uk/smart-living)*

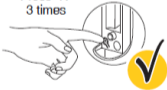
# Local Reset

Only use this when the existing Z-Wave controller is missing or inoperable

- Press "R" Button 3 times with Handle up



Press "R"  
3 times

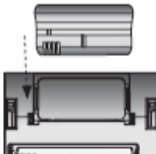


# Keyless Connected

## *Inserting the Module*



Remove the batteries



Insert the module



Re-insert batteries

## ***Add Mode***

Put the Z-Wave controller into **add** or **learn** mode

Enter the Master code on the lock, followed by #

Press the 4 button, followed by #

Press the 1 button followed by #

Refer to the operation manual of the Z-Wave controller to complete the learn in process

For more information on this please visit:

*[www.yale.co.uk/smart-living](http://www.yale.co.uk/smart-living)*

## ***Remove Mode***

Put the Z-Wave controller into remove mode

Enter the Master code on the lock, followed by #

Press the 4 button, followed by #

Press the 3 button followed by #

Refer to the operation manual of the Z-Wave controller to complete the **remove** process

For more information on this please visit:

*[www.yale.co.uk/smart-living](http://www.yale.co.uk/smart-living)*

## ***Reset locally***

Only use this when the existing Z-Wave controller is missing or inoperable

Enter the Master code on the lock, followed by #

Press the 4 button, followed by #

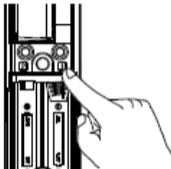
Press the 0 button followed by #

For more information on this please visit:

*[www.yale.co.uk/smart-living](http://www.yale.co.uk/smart-living)*

# Keyfree Connected

## *Inserting the Module*

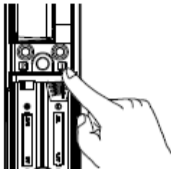


Remove the batteries



Insert the module





Re-insert batteries

## ***Add Mode***

Put the Z-Wave controller into **add** or **learn** mode

Enter the Master code on the lock, followed by #.

Press the 4 button, followed by #

Press the 1 button followed by #

Refer to the operation manual of the Z-Wave controller to complete the learn in process.

For more information on this please visit:

*[www.yale.co.uk/smart-living](http://www.yale.co.uk/smart-living)*

## ***Remove Mode***

Put the Z-Wave controller into Remove mode

Enter the Master code on the lock, followed by #.

Press the 4 button, followed by #

Press the 2 button followed by #

Refer to the operation manual of the Z-Wave controller to complete the remove process.

For more information on this please visit:

*[www.yale.co.uk/smart-living](http://www.yale.co.uk/smart-living)*

## ***Reset locally***

Only use this when the existing Z-Wave controller is missing or inoperable

Enter the Master code on the lock, followed by #

Press the 4 button, followed by #

Press the 0 button followed by #

For more information on this please visit:

*[www.yale.co.uk/smart-living](http://www.yale.co.uk/smart-living)*

## Help & Support

For Help & Support please visit ***[www.yale.co.uk/help](http://www.yale.co.uk/help)***

Hereby, ASSA ABLOY Ltd,  
School Street, WV13 3PW  
declares that the Z-Wave  
Module 2 is in compliance  
with Directive 2014/53/EU.  
The full text of the EU  
declaration of conformity is  
available at the following  
internet address:

***[www.yale.co.uk/declaration-of-conformity](http://www.yale.co.uk/declaration-of-conformity)***

## Integration Information

※ Information about association group

- Grouping: 2 available / Group identifier: 1, 2 / Device per group: 5 devices

※ S2 Security CCs and security level

Command Class	Ver.	Note	Command Class	Ver.	Note
Alarm	1	Secure	Schedule Entry Lock	3	Secure
Association	2	Secure	Security	1	Non Secure
Association Group Info	1	Secure	Security 2	1	Non Secure
Battery	1	Secure	Supervision	1	Secure
Configuration	1	Secure	Time	2	Secure
Device Reset Locally	1	Secure	Time Parameter	1	Secure
Door Lock	2	Secure	Transport Service	2	Non Secure
Door Lock Logging	1	Secure	User Code	1	Secure
Manufacturer Specific	2	Secure	Version	2	Secure
Powerlevel	1	Secure	Z-Wave Plus Info	2	Non Secure

※ Configuration

Usage	Parameter Number	Size	Value	Description
Set volume level	0x01	1 byte	0x01	Enable Silent mode
			0x02	Set volume low
			0x03 (default)	Set volume high
Enable/Disable Auto Relock	0x02	1 byte	0xFF (default)	Enable Auto relock
			0x00	Disable Auto relock
Set Relock time	0x03	1 byte	7 ~ 60 (default : 7)	Set relock time in range 7 to 60 sec Digital door lock keeps open state for relock time once unlocking operation is executed.
Set Remote Relock time	0x06	1 byte	10 ~ 90 (default : 10)	Set remote relock time in range 10 to 90 sec Digital door lock keeps open state for remote relock time once unlocking operation by remote controller is executed.