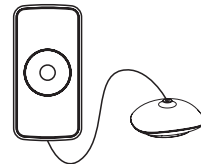


zipato®

SMART WATER LEAKAGE SENSOR

QUICK INSTALLATION GUIDE
v1.0



TRADEMARKS

Zipato and the Zipato logo are registered Trademarks. All other product names mentioned herein may be trademarks or registered trademarks of their respective companies.

NOTICE

Although Zipato has attempted to ensure the accuracy of the content of this manual, it is possible that this document may contain technical inaccuracies, typographical, or other errors. Zipato assumes no liability for any error in this publication, and for damages, whether direct, indirect, incidental, and consequential or otherwise, that may result from such error, including, but not limited to loss of data or profits.

Zipato provides this publication "as is" without warranty of any kind, either express or implied, including, but not limited to implied warranties of merchantability or fitness for a particular purpose. The published information in the manual is subject to change without notice. Zipato reserves the right to make changes in the product design, layout, and driver revisions without notification to its users. This version of the Installation guide supersedes all previous versions.

INTRODUCTION

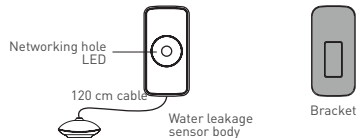
Smart Water Leakage sensor adopts Z-Wave wireless module. Super low power consumption circuit design ensures the long battery lifespan. Separate design of body and sensor efficiently prevents the influence resulted from high humidity. High precision and sensitivity applicable for basement, machine room, hotel, water tower, pool, swimming pool, solar, kitchen, bathroom and other places may have water leakage or water overflow.

SPECIFICATION

Working voltage: DC3V (2 x AAA battery)
Static current: $\leq 5\mu\text{A}$
Alarm current: $\leq 35\text{mA}$
Networking: Z-Wave
Wireless networking distance: ≤ 70 (open area)
Working temperature: $-10^{\circ}\text{C} \sim +50^{\circ}\text{C}$
Working humidity: max 95%RH
Body dimensions: 76 x 36.6 x 16.5 mm
Sensor dimensions: 28.3 x 26.5 x 12.2 mm

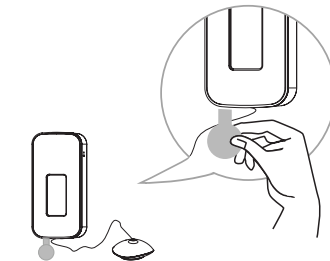
WARNINGS

1. Install water leakage sensor at areas where it may leak.
2. Don't install water leakage sensor at position of rainwater, lampblack, water vapor, etc.
3. Don't install water leakage sensor at water immersed position.



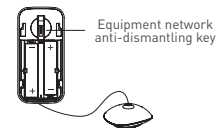
INSTALLATION

INSTALLATION STEP 1:



Remove battery insulation film to power it on

INSTALLATION STEP 2:



1. DEVICE INCLUSION

- Click [Add] icon in Z-Wave PC Controller Program.
- Press the networking button 3 times within 1.5s, Green LED is blinking 3 times within 1 second.
- If Inclusion Process is successful, Green led will turn off.

2. DEVICE EXCLUSION

- Click [Remove] icon in Z-Wave PC Controller Program
- Press the networking button 3 times within 1.5s
- If Exclusion Process is successful, Green led is Blinking 6 times, then turn off.

ASSOCIATION & ASSOCIATION GROUP INFORMATION

- Lifeline between controller and Water Leak Sensor
- Supported command classes

Battery report, Notification report, and Device Reset Locally notification, Binary report.

- Association Group description
- Association group 1: Lifeline association group
- Maximum supported nodes are 1.

Include command classes: Battery report, Notification report, and Device Reset Locally notification, Binary report.

- Association group 2: Root Device group (Binary Sensor)
- Maximum supported nodes are 5.

1-Binary Sensor Command Class: Compatible with 300 series
2-Binary Sensor reports status of water or no water via Lifeline.
3-When the sensor detects status change between water and no water, the device will be triggered.

- Association group 3: Root Device group (Binary Sensor)
- Maximum supported nodes are 5.

- Binary Sensor Command Class: Compatible with 300 series
1-Binary Sensor reports the removed status of water sensor.
2-When the sensor detects status change of tamper, the device will be triggered.

- Association group 4: Root Device group (Notification)

- Maximum supported nodes are 5.

1-Notification reports reports status of detect water or no water via Lifeline.

2-When the sensor detects status change between water and no water, the device will be triggered.

- Association group 5: Root Device group (Notification)

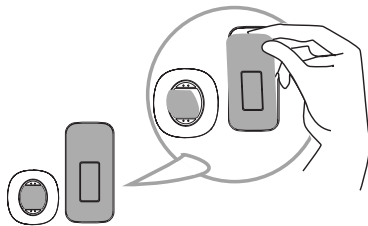
- Maximum supported nodes are 5.

1-Binary Sensor reports the removed status of water sensor
1-When the sensor detects status change of tamper, the device will be triggered.

4-Association & Association Group Information

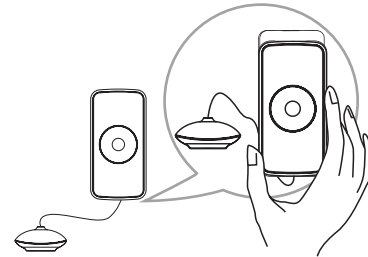
- Lifeline between controller and the product
- Supported command classes: Battery report, multilevel sensor, and Device Reset Locally notification.

INSTALLATION STEP 3:



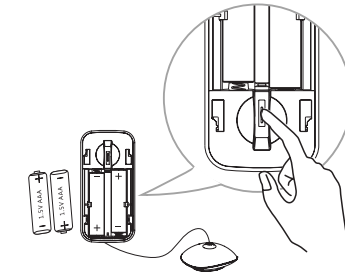
Tear off the gummed film and stick the equipment in the required area.

INSTALLATION STEP 4:



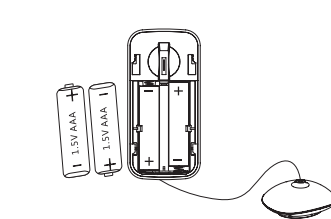
Insert Water leakage body into the bracket.

FACTORY RESET



Long press the networking button, then power on (put into the battery), ID code is clear and reset to factory settings. Use the reset procedure only when the primary controller is missing or inoperable.

BATTERY REPLACEMENT



Replace the battery correctly, following the battery positive and negative electrode. Please pay attention to environmental protection and dispose used batteries properly.

LIMITED PRODUCT WARRANTY

→ GENERAL TERMS

Nothing in this Limited Product Warranty affects your statutory rights as a consumer.

The Limited Product Warranty set forth below is given by Tri plus grupa d.o.o. (Europe) (herein referred to as "ZIPATO"). This Limited Product Warranty is only effective upon presentation of the proof of purchase. Upon further request by ZIPATO, this warranty card has to be presented, too.

EXCEPT AS EXPRESSLY SET FORTH IN THIS LIMITED WARRANTY, ZIPATO MAKES NO OTHER WARRANTIES, EXPRESS OR IMPLIED, INCLUDING ANY IMPLIED WARRANTIES OF MERCHANTABILITY AND FITNESS FOR A PARTICULAR PURPOSE. ZIPATO EXPRESSLY DISCLAIMS ALL WARRANTIES NOT STATED IN THIS LIMITED WARRANTY. ANY IMPLIED WARRANTIES THAT MAY BE IMPOSED BY LAW ARE LIMITED IN DURATION TO THE LIMITED WARRANTY PERIOD. TO THE EXTENT ALLOWED BY LOCAL LAW, THE REMEDIES IN THIS WARRANTY STATEMENT ARE CUSTOMER'S SOLE

AND EXCLUSIVE REMEDIES AGAINST ZIPATO. THEY DO NOT, HOWEVER, AFFECT OR RESTRICT THE RIGHTS YOU HAVE AGAINST THE BUSINESS YOU BOUGHT A ZIPATO PRODUCT FROM. IN NO EVENT WILL ZIPATO BE LIABLE FOR LOSS OF DATA OR FOR INDIRECT, SPECIAL, INCIDENTAL, CONSEQUENTIAL (INCLUDING LOST PROFIT OR DATA), OR OTHER DAMAGE, WHETHER BASED IN CONTRACT, TORT, OR OTHERWISE. HOWEVER, NOTHING IN THIS AGREEMENT LIMITS ZIPATO'S LIABILITY TO YOU (I) IN THE EVENT OF DEATH OR PERSONAL INJURY TO THE EXTENT RESULTING FROM ZIPATO'S NEGLIGENCE, OR (II) TO THE EXTENT RESULTING FROM ANY FRAUDULENT MISREPRESENTATION ON THE PART OF ZIPATO, OR (III) TO THE EXTENT ARISING UNDER PART 1 OF THE CONSUMER PROTECTION ACT 1987 OF THE UNITED KINGDOM. SOME STATES OR COUNTRIES DO NOT ALLOW: (1) A DISCLAIMER OF IMPLIED WARRANTIES; (2) A LIMITATION ON HOW LONG AN IMPLIED WARRANTY LASTS OR THE EXCLUSION; OR (3) LIMITATION OF INCIDENTAL OR CONSEQUENTIAL DAMAGES FOR CONSUMER PRODUCTS. IN SUCH STATES OR COUNTRIES, SOME EXCLUSIONS OR LIMITATIONS OF THIS LIMITED WARRANTY MAY NOT APPLY TO YOU. THIS LIMITED WARRANTY GIVES YOU SPECIFIC LEGAL RIGHTS. YOU MAY ALSO HAVE OTHER RIGHTS THAT MAY VARY

FROM STATE TO STATE OR FROM COUNTRY TO COUNTRY. YOU ARE ADVISED TO CONSULT APPLICABLE STATE OR COUNTRY LAWS FOR A FULL DETERMINATION OF YOUR RIGHTS.

This Limited Product Warranty applies to ZIPATO branded hardware products (collectively referred to as "ZIPATO Hardware Products") sold by ZIPATO (Europe), its European subsidiaries, affiliates, authorized resellers, or country distributors (collectively referred to as "ZIPATO Resellers") with this Limited Product Warranty.

The term "ZIPATO Hardware Product" is limited to the hardware components and all its internal components including firmware.

The term "ZIPATO Hardware Product" DOES NOT include any software applications or programs.

→ GEOGRAPHICAL SCOPE OF THE LIMITED PRODUCT WARRANTY

This Limited Product Warranty is applicable to Hardware Products sold by Zipato Resellers in all countries listed at the beginning of this document under the heading "Countries in which this ZIPATO Limited Product Warranty applies". The Limited Product Warranty will be honored in any country where

ZIPATO or its authorized service providers offer warranty service subject to the terms and conditions set forth in this Limited Product Warranty. However, warranty service availability and response times may vary from country to country and may also be subject to registration requirements.

→ LIMITATION OF PRODUCT WARRANTY

ZIPATO warrants that the products described below under normal use are free from material defects in materials and workmanship during the Limited Product Warranty Period set forth below ("Limited Product Warranty Period"), if the product is used and serviced in accordance with the user manual and other documentation provided to the purchaser at the time of purchase (or as amended from time to time).

ZIPATO does not warrant that the products will operate uninterrupted or error-free or that all deficiencies, errors, defects or non-conformities will be corrected.

This warranty shall not apply to problems resulting from: (a) unauthorized alterations or attachments; (b) negligence, abuse or misuse, including failure to operate the product in accordance with specifications or interface requirements; (c) improper handling; (d) failure of goods or services not obtained

from ZIPATO or not subject to a then-effective ZIPATO warranty or maintenance agreement; (e) improper use or storage; or (f) fire, water, acts of God or other catastrophic events. This warranty shall also not apply to any particular product if any ZIPATO serial number has been removed or defaced in any way. ZIPATO IS NOT RESPONSIBLE FOR DAMAGE THAT OCCURS AS A RESULT OF YOUR FAILURE TO FOLLOW THE INSTRUCTIONS FOR THE ZIPATO HARDWARE PRODUCT.

→ LIMITED PRODUCT WARRANTY PERIOD

The Limited Product Warranty Period starts on the date of purchase from ZIPATO. Your dated sales or delivery receipt, showing the date of purchase of the product, is your proof of the purchase date. You may be required to provide proof of purchase as a condition of receiving warranty service. You are entitled to warranty service according to the terms and conditions of this document if a repair to your ZIPATO branded hardware is required within the Limited Product Warranty Period.

[Other than in respect of products for domestic use (in particular those listed in the first and last boxes in the table below), this Limited Product Warranty extends only to the

original end user purchaser of this ZIPATO Hardware Product and is not transferable to anyone who obtains ownership of the ZIPATO Hardware Product from the original end-user purchaser.

→ PRODUCT WARRANTY PERIOD TABLE

PRODUCT TYPE	Smart Water Leakage Sensor
PRODUCT WARRANTY PERIOD	One (1) year

IMPORTANT

The content of "Product Type" listed above is subject to change; please refer to the www.zipato.com for latest update.

→ PERFORMANCE OF THE LIMITED PRODUCT WARRANTY

If a product defect occurs, ZIPATO's sole obligation shall be to repair or replace any defective Zipato Hardware Product free of charge provided it is returned to an Authorized ZIPATO Service Centre during the Limited Warranty Period. Such repair or replacement will be rendered by ZIPATO at an Authorized

ZIPATO Service Centre. All component parts or hardware products that are replaced under this Limited Product Warranty become the property of ZIPATO. The replacement part or product takes on the remaining Limited Warranty Period of the replaced part or product. The replacement product need not be new or of an identical make, model or part; ZIPATO may in its discretion replace the defective product (or any part thereof) with any reconditioned equivalent (or superior) product in all material respects to the defective product.

WARRANTOR

Tri plus grupa d.o.o.
Banjaveciceva 11
10 000 Zagreb
CROATIA

TEL +385 (0)1 4004 404
FAX +385 (0)1 4004 405

DECLARATION OF CONFORMITY



The manufacturer Tri plus grupa d.o.o declares under our sole responsibility that the product:

Marketing model: Smart Water Leakage Sensor
Regulatory model: hm-hs1wl-z
Trade/Brand name: Zipato

is in conformity with the Directive 2014/53/EU and carries the CE marking accordingly.

ETSI EN 300 220-1 V2.4.1 (2012-05)
ETSI EN 300 220-2 V2.4.1 (2012-05)

ETSI EN 301 489-1 V1.9.2 (2011-09)
ETSI EN 301 489-3 V1.6.1 (2013-08)

EN 62479: 2010

EN 60950-1: 2006+A11:2009+A1:2010+A12:2011+A2:2013

Changes or modifications not expressly approved by Tri plus grupa d.o.o. for compliance could void the user's authority to operate the equipment.

→ DISPOSING AND RECYCLING YOUR PRODUCT

When it reaches end of life, dispose of the product according to your local environmental laws, guidelines and regulations.



This symbol on the product or packaging means that according to local laws and regulations needs to be disposed of separately from household waste. Once this product has reached the end of its life, please take it to a collection point (recycle facilities) designated by your local authorities, some will accept your product for free or simply drop it off at your Zipato re-seller store. By recycling the product and its packaging in this manner you help to conserve the environment and protect human health. At Zipato, we understand and are committed to reducing any impact our operations and products may have on the environment. To minimize this impact Zipato designs and builds its products to be as environmentally friendly as possible, by using recyclable, low toxic materials in both products and packaging.

→ COPYRIGHT

© 2017 Tri plus grupa d.o.o. All Rights Reserved.
No part of this manual may be reproduced or transmitted in any form without the expressed, written permission of Tri plus grupa d.o.o.