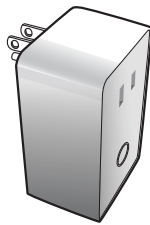


IQ Dimmer

QZ2140-840

Plug In Dimmer

(Model: PD-100)



This product speaks with other Z-Wave certified devices

INTRODUCTION

Qolsys' IQ Dimmer is a Z-Wave Plus® certified device with S2 security and SmartStart features. You can now add this device securely and with ease using QR code on the product with compatible gateways supporting S2 and Smart Start. The IQ Dimmer is a member of the Z-Wave family and communicates with other Z-Wave certified devices in a control network. It can be used to turn any plug in lamps On, Off, or control dimming of any lamps with dimmable light bulbs. Each Z-Wave device also serves as a node to repeat the signal in the network, thus, extending the overall Z-Wave mesh wireless network range. Different types and brands of Z-Wave devices can be associated with the IQ Dimmer in your system and they will work together to optimize and expand the coverage of your Z-Wave network.

FEATURES

- Works with any AC operated lamps with incandescent and dimmable fluorescent (CFL) or LED light bulbs
- ON/OFF status and location LED indicator
- Remotely or manually turns ON or OFF, or DIM lights
- Does not block the second AC outlet
- Z-Wave 500 Series module inside
- Internal resettable fuse to protect from surge current
- Works with any certified gateway supporting Z-Wave
- Z-Wave 500 Series module inside
- Please find the QR code label with DSK on the bottom of the device.

! WARNING !

RISK OF FIRE, ELECTRICAL SHOCK & BURNS

DO NOT USE WITH MEDICAL AND LIFE SUPPORT INSTRUMENT

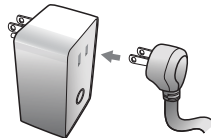
No user serviceable parts are in this module

To reduce the risk of electric shock, this product has a grounding type plug that has a third (grounding) pin. This plug will only fit into a grounding type power outlet. If the plug does not fit into the outlet, contact a qualified electrician to install the proper outlet. Do not change the plug in any way

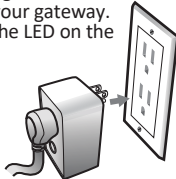
CAUTION: To Reduce the Risk of Overheating And Possible Damage To Other Equipment, Do Not Install To Control A Motor-Operated Appliance, A Non-Dimmable Fluorescent Lighting Fixture, Or A Transformer-Supplied Appliance
The lighting devices connected to this Z-Wave module must not exceed 2.5A, 300W incandescent, 65W dimmable CFL/LED.

SETUP

Step 1 Plug the 2-pin AC power plugs of lighting device to the receptacle of the IQ Dimmer.



Step 2 Insert the module's 3-pin plug into an AC outlet in the same room as your gateway. In normal operating mode, the LED on the front panel will be lit.



Step 3 Inclusion/Exclusion: Add or remove the device into your network by a Z-Wave certified controller. The IQ Dimmer supports the latest S2 security and SmartStart offered by Z-Wave certified controllers. If your controller supports S2 or SmartStart, please refer to the user guide of the controller for detailed instructions on adding or removing devices to/from the network. You should be able to add/remove the IQ Dimmer into your network using the unique QR code or the DSK 5 digit pin located on the product or packaging. In addition, the device can be added or removed using the traditional method for Z-Wave as follows:

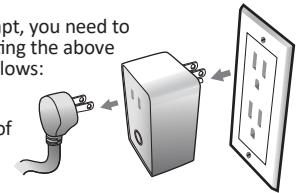
1. Place your network controller into inclusion mode by following the controller manufacturer's instructions.
2. When the controller is ready, single click the button on the front of the IQ Dimmer. The controller should indicate that the new device was added successfully.
3. Once the IQ Dimmer has been successfully added to your home network, you can move it to the preferred location in the home.

If the controller shows it failed, repeat the procedure.

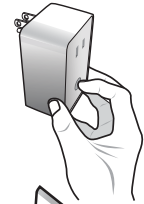
Manual Reset

If Inclusion still fails after the 2nd attempt, you need to first reset the IQ Dimmer before repeating the above step. The manual reset method is as follows:

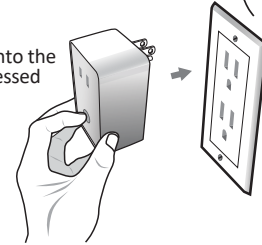
1. Unplug the IQ Dimmer from the AC outlet and also unplug the power plug of the appliance (if plugged in).



2. Press and hold the button on the IQ Dimmer.



3. Plug the IQ Dimmer back into the AC outlet with the button pressed



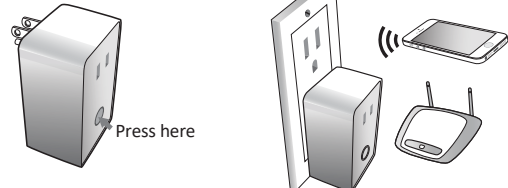
After 3 seconds, release the button. If you see the button blink, that means that the IQ Dimmer has been reset successfully and you may retry Step 3 above to add the module into your network. Otherwise, please repeat the manual reset procedure.

Note: If the IQ Dimmer was previously Added (Included) in your network, resetting it locally does not mean it has been removed from your network. If you wish to remove the IQ Dimmer from your network you will need to Delete (Exclude) the module from the network by your controller. If the IQ Dimmer is removed from the network supporting S2 security, the only way to add the device back into the network is using the QR code or the DSK code. Therefore, please store the QR code on the product as well as copy of the full DSK printed on the package in a safe location.

Use the manual reset procedure only in the event that the network primary controller is lost or otherwise inoperable.

BASIC OPERATION

The connected lighting devices can be controlled manually with a push button OR Wirelessly with a remotely



A Z-Wave certified controller is capable of setting up Qolsys products in your desired network. Once the device is added, you may assign it to a Group. Furthermore, it can be set in Association with another Z-Wave device to perform a specific triggered function such as turning lights on when motion is detected. Please refer to the instructions manual of your controller for details and procedures on how these settings can be done.

In the event of a power failure, the Qolsys device will return to the last dimming level after the power is restored.

About the push button:

There is a single button on the IQ Dimmer for manual operation that:

- A) Manually turns the connected lighting ON/OFF by pressing the button. It functions as a toggle switch; if the light is ON, pressing the button turns the light OFF and vice versa.
- B) Adjust the brightness level of the connected lighting by pressing and holding the button. Release the button when the desired level is reached. It functions as a toggle switch as well. The lighting keeps dimming until the minimum level is reached or the button is released. When you press the button again and hold, the brightness of the light will keep increasing until the maximum level is reached or when the button is released.
- C) Adds(Includes) or Deletes(Excludes) your IQ Dimmer to/from your Z-Wave network. Please refer to the instructions manual of your gateway or remote controller for detail procedures on how these actions can be done.

This push button is also backlit with an LED indicator that will be On when the connected appliance is Off, and vice versa. The module may be easily spotted even in a dark environment.

ADVANCED CONFIGURATION

Configurable Parameter Settings: If your controller supports Z-Wave configurable parameters, the following settings can be modified.

Parameters				
#	Description	Values	Default	Bytes
3	Nightlight	When value = 0, the LED indicator will be OFF when the connected appliance is ON, and the LED indicator will be ON when the connected appliance is OFF. If value = 1, the LED indicator will be OFF when the connected appliance is OFF, and the LED indicator will be ON when the connected appliance is ON. If value = 2, the LED indicator will be always OFF regardless of the load status.	0	1
9	Dimming Resolution Level	Valid Values: 1-99, indicates the number of dimming levels.	1	1
10	Dimming Resolution Speed	Valid Values: 1-255, indicates the time duration of each level.	3	1

Depending on the capability of your controller or gateway software, the following simple to advanced operations can be performed. Please refer to the controller's or gateway manual for details.

Association:

1. The IQ Dimmer supports group one for lifeline communication.
2. You can only associate one Z-Wave device to group one.
3. Lifeline association only supports the "manual reset" event.
4. For instructions on how to "set lifeline associate", please refer to your controller/gateway instructions.

SPECIFICATIONS

Model	PD-100
Input power	120 VAC, 60 Hz.
Max output loading	2.5A, 300W Incandescent, 65W Dimmable CFL/LED
Radio frequency	908.4/916 MHz.
Wireless range	Up to 132ft line of sight between the controller and the other available nodes.
Normal operating temperature	77°F (25°C)
FOR INDOOR USE ONLY	

Interoperability with Z-Wave devices

A Z-Wave network can integrate devices from various classes of products, and these devices can be made by different manufacturers. The Qolsys product introduced in this instructions manual has a Z-Wave certification which allows such an interoperability.

FCC ID: 2ABWCPCD100

This device complies with part 15 of the FCC rules. Operation is subject to the following two conditions: (1) this device may not cause harmful interference, and (2) this device must accept any interference received, including interference that may cause undesired operation.

NOTE: The manufacturer is not responsible for any radio or TV interference caused by unauthorized modifications or changes to this equipment. Such modifications or changes could void the user's authority to operate the equipment.

IC: 11786A-PD100

This device complies with Part 15 of the FCC Rules and with RSS of Industry Canada. Operation is subject to the following two conditions:

- (1) This device may not cause harmful interference, and
- (2) This device must accept any interference received, including interference that may cause undesired operation.

Le présent appareil est conforme aux CNR d'Industrie Canada applicables aux appareils radio exempts de licence. L'exploitation est autorisée aux deux conditions suivantes :

- (1) l'appareil ne doit pas produire de brouillage, et
- (2) l'utilisateur de l'appareil doit accepter tout brouillage radioélectrique subi, même si le brouillage est susceptible d'en compromettre le fonctionnement.

This Class B digital apparatus complies with Canadian ICES-003.

Cet appareil numérique de la classe B est conforme à la norme NMB-003 du Canada.

Z-Wave is a registered trademark of Sigma Designs.

WARRANTY

Qolsys warrants to the original purchaser of this product that for the warranty period, this product will be free from material defects in materials and workmanship.

The foregoing warranty is subject to the proper installation, operation and maintenance of the product in accordance with installation instructions and the operating manual supplied to customer.

Warranty claims must be made by customer in writing within 30 days of the manifestation of a problem. Qolsys' sole obligation under the foregoing warranty is to repair, replace or correct any such defect that was present at the time of delivery or during the warranty period. The warranty does not extend to consequential or incidental damage to other products that may be used with this product. For inquiry and customer service, email techsupport@qolsys.com. All brand names shown are trademarks of their respective owners.

Warranty period: limited 1 year from date of purchase.

Qolsys
1900 The Alameda Suite 420
San Jose, CA 95126

IQ Dimmer_041018

Cut out and save the important information below:



Z-Wave Device Specific Key (DSK)

IMPORTANT Your Z-Wave device has a unique Device Specific Key (DSK) on the product and packaging that is required to add or re-add the device to a network with a controller supporting Security 2 (S2). Be sure to save the DSK code for each device and store in a safe place. Do not remove the DSK from the product. Take a photo of the full DSK code on the packaging or write the full code here:

Installation Date: _____

Device Location: _____

