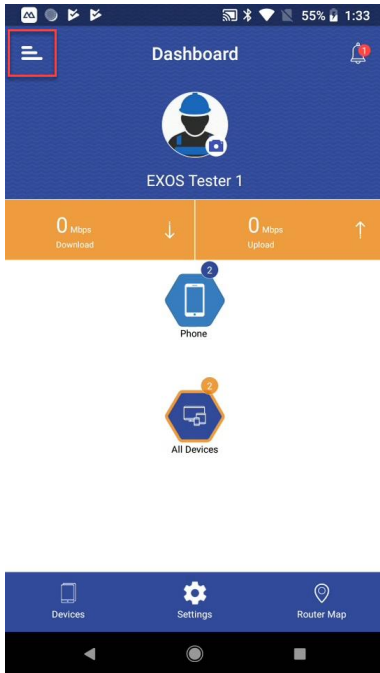


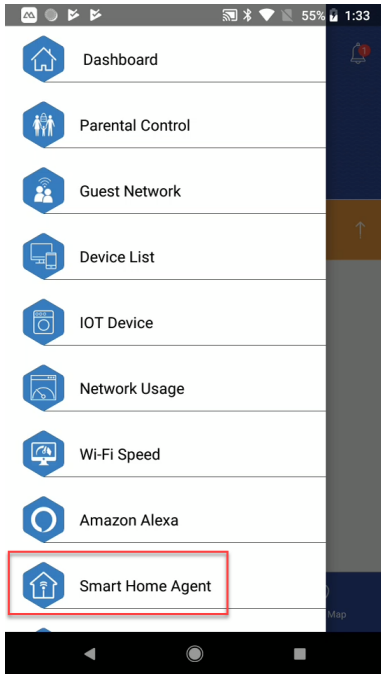
## Quick Start Manual

### Onboarding Smart Home (Z-Wave) Devices with gigaSPIRE MAX

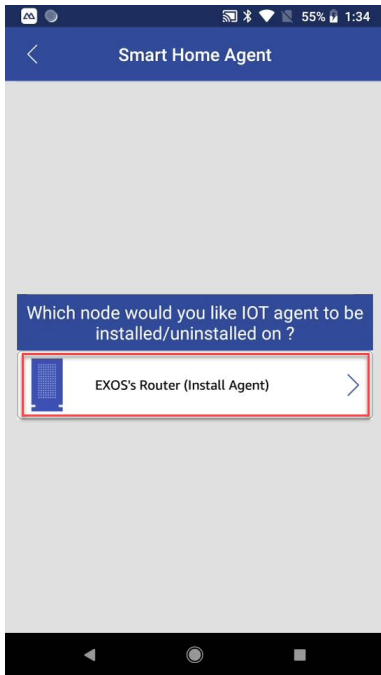
1. Click on the hamburger menu (top left).



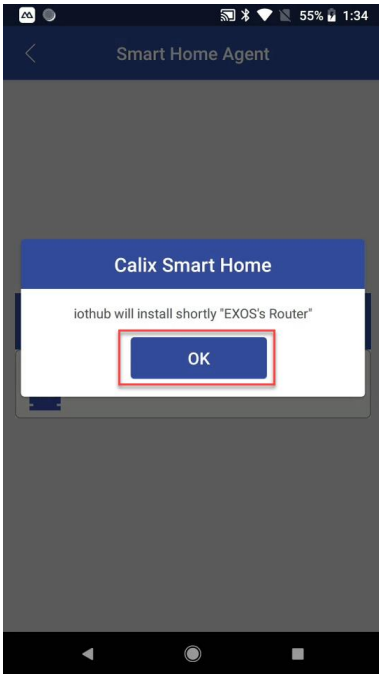
2. Select Smart Home Agent to install the smart home hub.



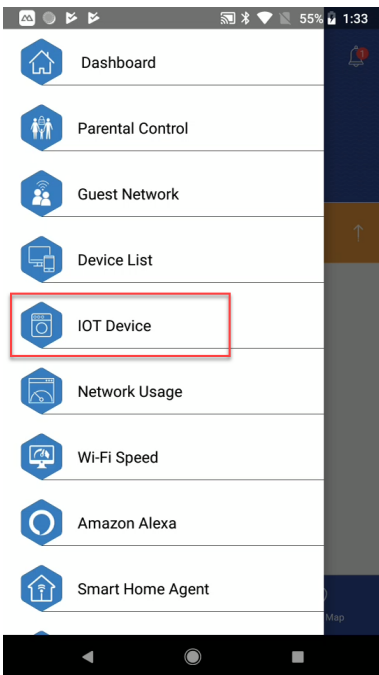
3. Select the particular node where you want to install the smart home hub.



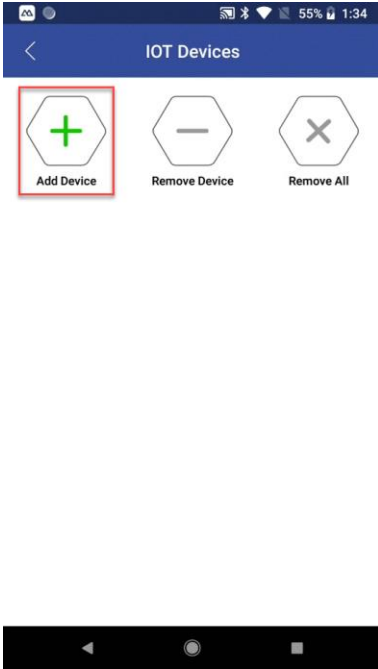
4. Click OK.



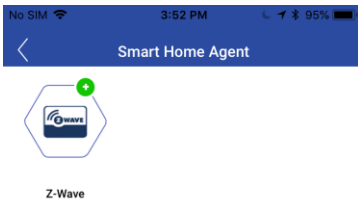
5. Click on IOT Device to add a Z-Wave compatible device.



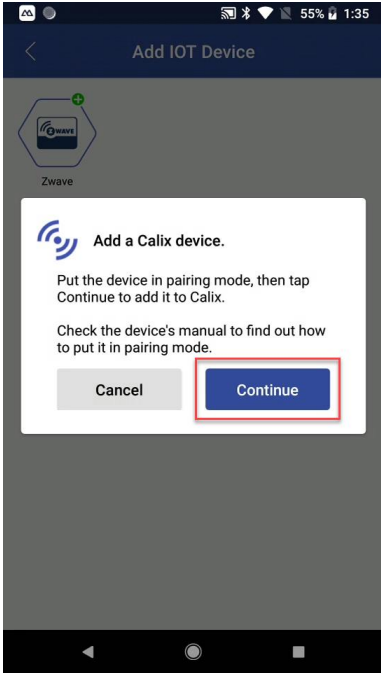
6. Click on Add Device.



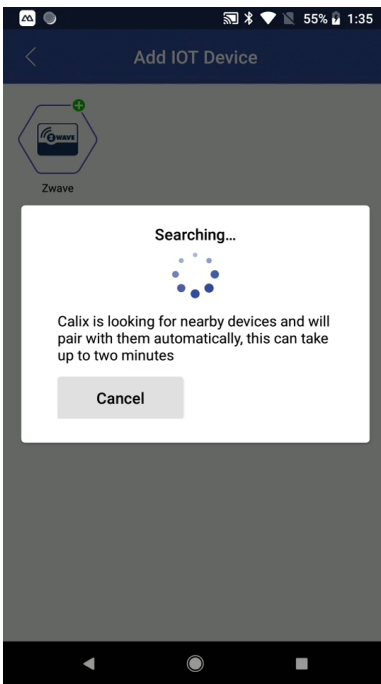
7. Click on ZWave.



8. Put the device in pairing mode and click on Continue.

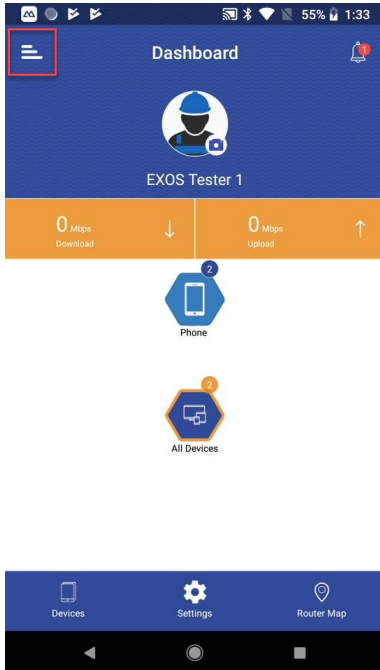


9. gigaSPIRE searches for devices in pairing mode and pairs them automatically.

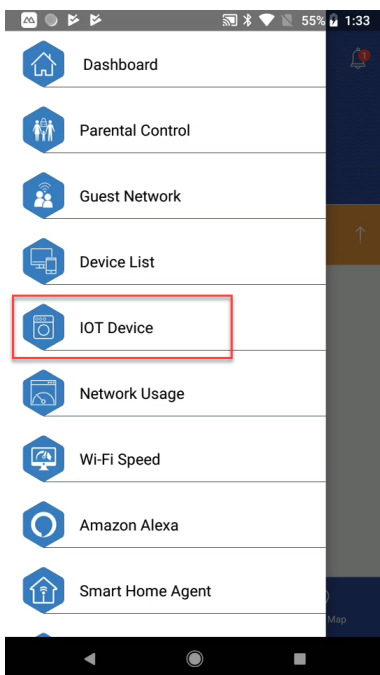


## Remove Smart Home (Z-Wave) Devices with gigaSPIRE MAX

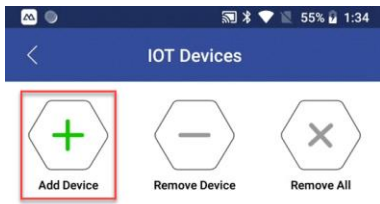
1. Click on the hamburger menu (top left).



2. Click on IOT Device to remove a Z-Wave compatible device.



3. Click on Remove Device.



4. Select device to be removed
5. Device is removed

## Reset gigaSPIRE MAX

1. Go to the back of the GigaSPIRE unit
2. Locate the "reset" pin hole
3. Take a paper clip and push into the pin hole and hold it for 10 seconds.
4. The unit will reset to factory default.

## Learning Instruction

1. Open the App and click Dashboard menu, then click the smart home device menu.
2. Click the + menu
3. It goes to the Learn Mode menu.
4. Enter the DSK/PIN if primary controller asks for the DSK.
5. DSK: **03706**-09608-25620-61321-61741-62290-29984-03204



## Lifeline

Z-Wave Plus Lifeline; A Notification frame is sent to the nodes in this association group when a Lifeline event occurs. Notification event clear signal when the Lifeline event is no longer detected.

The lifeline is Association group 1 with 5 nodes.



**If this controller is the primary controller for your network, resetting it will result in the nodes in your network being orphaned and it will be necessary after the reset to exclude and re-include all of the nodes in the network. If this controller is being used as a secondary controller in the network, use this procedure to reset this controller only in the event that the network primary controller is missing or otherwise inoperable.**