



Digital Door Lock

User Guide YDM3109+

MUST READ

- This Product can be included and operated in any Z-Wave network with other Z-Wave certified devices from other manufacturers and/or other applications.

All non-battery operated nodes within the network will act as repeaters regardless of vendor to increase reliability of the network.

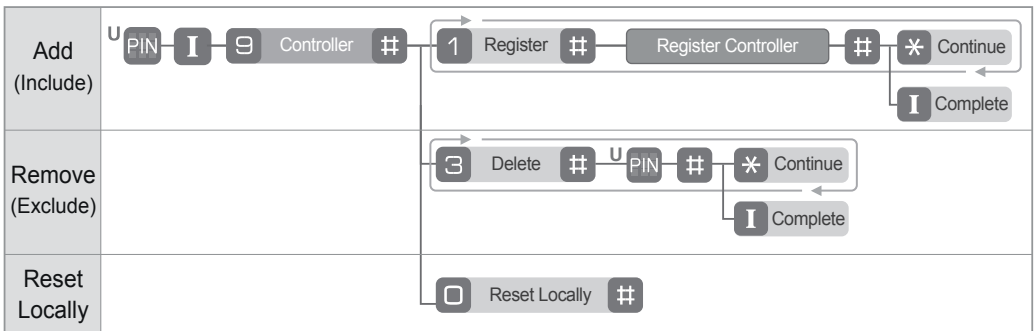
- This product(YDM3109+) is a Security Enabled Z-Wave Plus Product.

- Security Enabled Z-Wave Controller must be used in order to fully utilize this product.

- Network Module Setting : This setting becomes available through the Main Menu and allows the lock to connect with Controllers.

- Reset locally : Z-Wave Module exclusion by compulsion.

Only use this when the existing Z-Wave controller is missing or inoperable.



※ Information about association group

- Grouping: 1 available / Group identifier: 1 / Device per group: 1 device

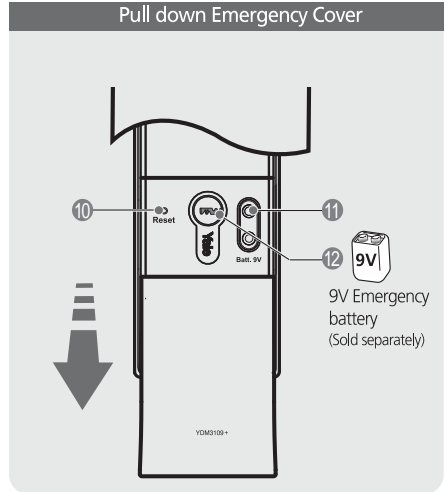
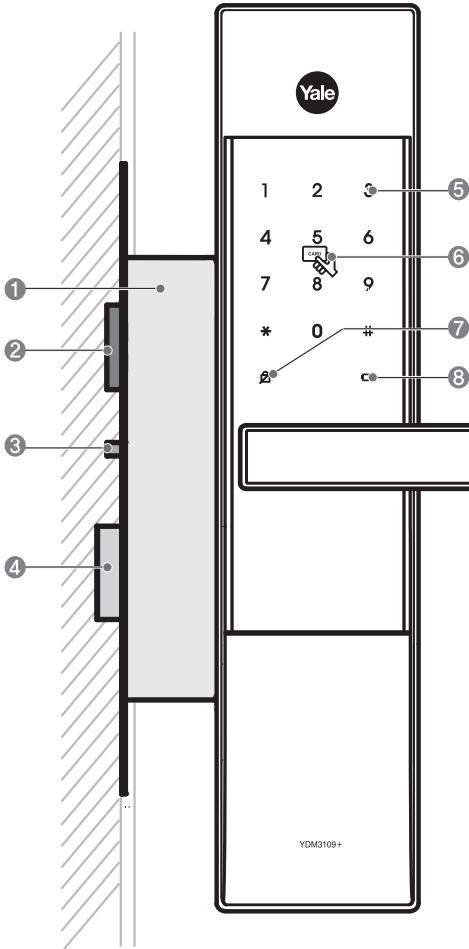
※ S2 Security CCs and security level

Command Class	Ver.	Note	Command Class	Ver.	Note
Alarm	1	Secure	Schedule Entry Lock	3	Secure
Association	2	Secure	Security	1	Non Secure
Association Group Info	1	Secure	Security 2	1	Non Secure
Battery	1	Secure	Supervision	1	Secure
Device Reset Locally	1	Secure	Time	2	Secure
Door Lock	2	Secure	Time Parameter	1	Secure
Door Lock Logging	1	Secure	Transport Service	2	Non Secure
Manufacturer Specific	2	Secure	User Code	1	Secure
Powerlevel	1	Secure	Version	2	Secure
			Z-Wave Plus Info	2	Non Secure

※ Alarm Report

- Alarm Type: 0x21 with Alarm Level: 0xFF is only sent when device reset locally menu("PIN#4#0#") is entered.

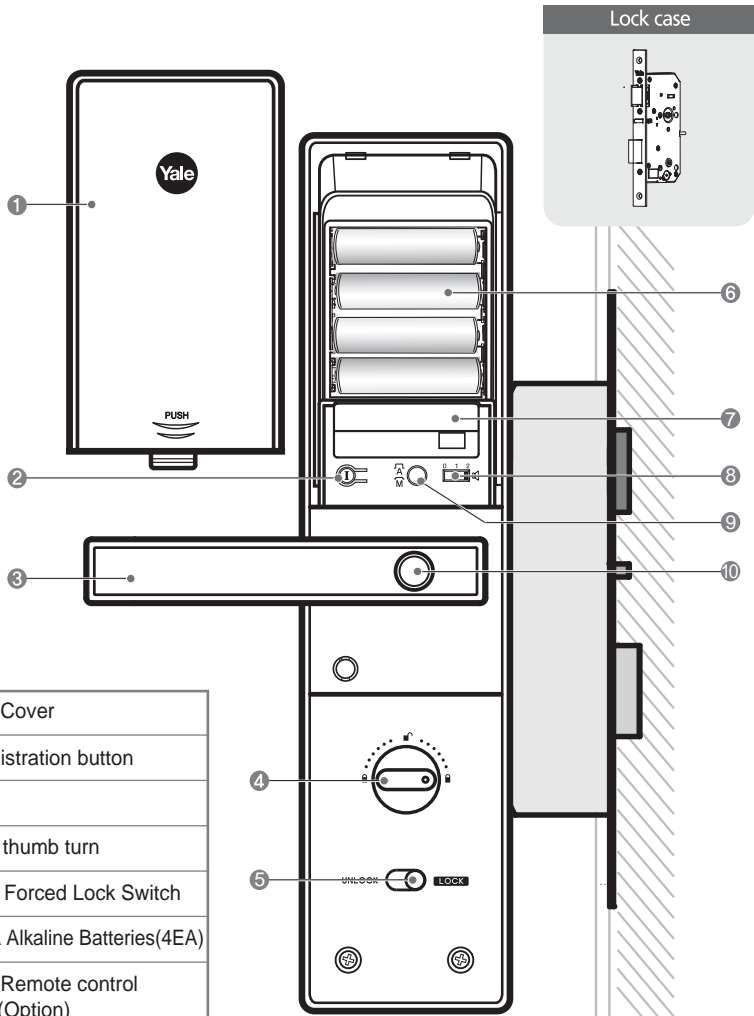
Front body (Front Body, Installation on the outside of the door)



①	Lock case
②	Latch Bolt
③	Automatic Locking Sensor
④	Dead Bolt
⑤	Keypad(10-Key)
⑥	Card Key Reader
⑦	Dead Bolt Jam Lamp
⑧	Battery Change Lamp
⑨	Lever
⑩	Reset button
⑪	Emergency Power Supply Terminal
⑫	Emergency Key

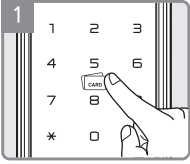
Main body

(Main Body, Installation on the inside of the door)

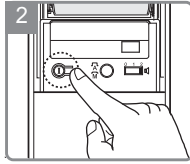


1	Battery Cover
2	① Registration button
3	Lever
4	Manual thumb turn
5	Internal Forced Lock Switch
6	1.5V AA Alkaline Batteries(4EA)
7	Slot for Remote control module(Optional)
8	Volume Control Switch
9	Auto / Manual Lock button
10	Safe handle button

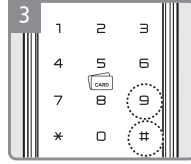
Register Controller



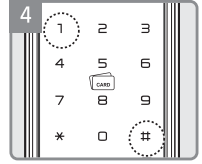
Enter the Master Code.



Press **I** button.



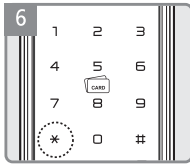
Enter [9], [#] buttons.



Enter [1], [#] buttons to register controller.

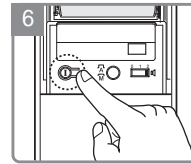


Register Controller followed by press [#] button to complete after beep sound from digital door lock



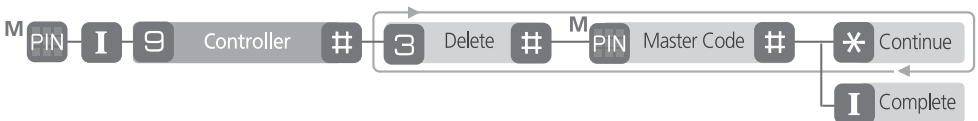
Press [*] button to continue.

OR



Press **I** button to complete.

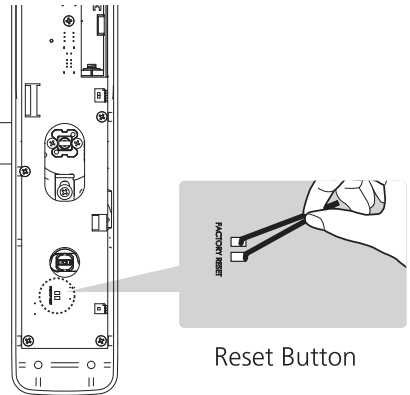
Delete Controller



Resetting Lock to Factory Default

When lock is reset to factory defaults all user codes (including the Master Code*) are deleted and all programming features are reset to original default settings (see below).

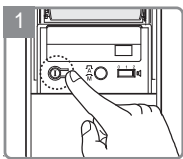
1. Remove the battery cover and batteries.
2. Remove the interior escutcheon to access the reset pads.
3. The reset pads are located on bottom of the PCB board (See image)
4. While pressing the reset pads with tweezers, reinstall batteries and release reset pads with tweezers.
5. Replace battery cover.



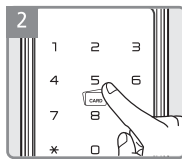
Upon reset, the Master Code creation is the only option available and must be performed prior to any other programming of the lock.

User Code Registration (4 ~10 digits)

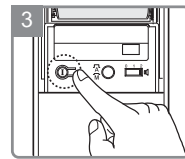
I **U** **PIN** User Code Registration(4 ~10) - Only One User Code **I** Complete



Press **I** button.



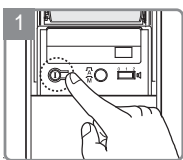
Enter New User Code.



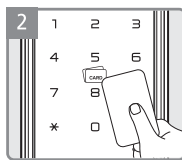
Press **I** button to complete.

User Card Key Registration (Up to 40ea)

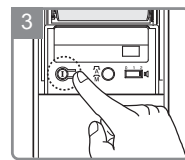
I **U** **CARD** User Card Key Registration - Up to 40ea **I** Complete Repeat if required



Press **I** button.

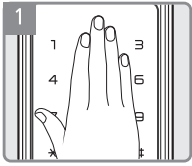


Contact all Card Keys you wish to register on Card Key reader one by one.

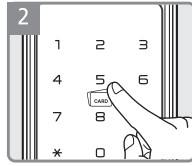


Press **I** button to complete.

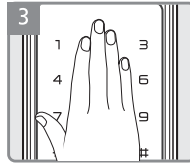
Unlocking Door with Code



Touch the keypad of the Front Body with your palm.

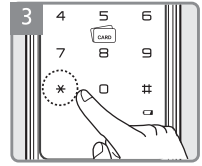


Enter the registered Code on the keypad.



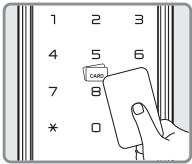
Touch the keypad of the Front Body with your palm.

OR



Enter the [*] button.

Unlocking Door with Card Key



Contact registered Card Key.