

HDL-7390SK  
Digital Door Lock

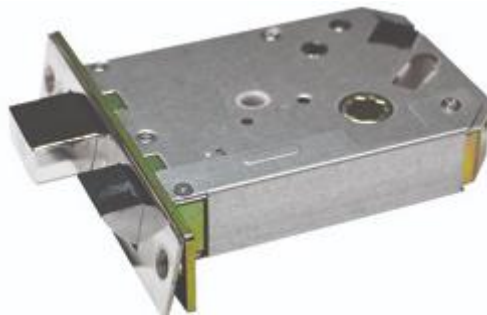
Manual

Ver 1.0

## Exterior Parts



## Mortise Lock



The HDL-7390SK Z-Wave is a secure electronic door lock that supports the Z-Wave Plus standard, which is compatible with earlier versions of Z-Wave.

A security enabled Z-Wave controller must be use. The HDL-7390SK supports the standard security S0 and the new security standard S2.

The HDL-7390SK can be included and operated in any Z-Wave network with other Z-Wave certified devices from other manufacturers and/or other applications.

All non-battery operated nodes within the network will act as repeaters regardless of vendor to increase reliability of the network.

### **Z-Wave Specifications**

- Device Type : Door Lock–Keypad (SPECIFIC\_TYPE\_SECURE\_KEYPAD\_DOOR\_LOCK)
- Role Type : LSS (Listening Sleeping Slave)
- Command Cass Support/Control

### **Z-Wave add/inclusion and remove/exclusion**

Please proceed with the door lock open.

- To add or include the HDL-7390SK into a Z-Wave network
  1. Set the controller in inclusion mode.
  2. Open the battery cover of the indoor body and press the [REG 1] button.
  3. Press the [1][4] button after pressing the [\*] button.
- To remove or exclude the HDL-7390SK into a Z-Wave network
  1. Set the controller in exclusion mode.
  2. Open the battery cover of the indoor body and press the [REG 1] button.
  3. Press the [3][6] button after pressing the [\*] button.

### **Factory Reset**

Please proceed with the door lock open.

Please use this procedure only when the primary controller is missing or otherwise inoperable.

- To Factory Reset
  1. Open the battery cover of the indoor body and press the [REG 1] button.
  2. Press the [8][0] button after pressing the [\*] button.

### **Voltage**

- 4 AA Alkaline 1.5V Batteries(6V)

### Supported Command Class

Command Class	Version	Not added	Non-Secure added	Securely added	
				Non-secure CC	Secure CC
Z-Wave Plus Info	2	Support	Support	Support	
Transport Service	2	Support	Support	Support	
Security 0	1	Support	Support	Support	
Security 2	2	Support	Support	Support	
Association	2				Support
Association Grp Info	1				Support
Battery	1				Support
Device Reset Locally	1				Support
Door lock	2				Support
Firmware update MD	4				Support
Manufacturer Specific	2				Support
Notification	8				Support
Power level	1				Support
Supervision	1				Support
User Code	1				Support
Version	3				Support

### Association(V2) & Association Group Information(V1)

- The HDL-7390SK supports one association groups:

-> Group 1 is the Lifeline group. It can contain up to 5 nodes. The Lifeline group on this lock is used to report door lock operation report, and device reset locally notifications to nodes on the group list.

### Battery CC(V1)

The Battery Get request can be used to get the status of the battery.

When battery level is low a battery warning is send to the controller.

### Door Lock(V2)

- Door Lock Operation is used to lock and unlock the HDL-7390SK.
- See table to see how the Door Lock Mode parameter affects the lock.

	Secured	Unsecured
Door Lock Mode	0xFF	0x00

In a Door Lock Operation Report the PDL-1000 will report.

Door Status		Unlocked	Locked
Door Lock Mode		0x00	0xFF
Handles		0x00	0x00
Door Condition	Bit 0 : Door	0 : Open, 1 : Close	
	Bit 1 : Deadbolt	0 : Locked, 1 : Unlocked	
Lock Timeout Minutes		0xFE	
Lock Timeout Seconds		0xFE	

### Firmware Update Meta Data(V4)

The HDL-7390SK supports firmware update of the Z-Wave module over the air.

The firmware upgrade takes ~30 min with S0 and ~20 min with S2

Firmware ID = 0x0181.

Firmware 0 ID = 0x0181.

**Manufacture Specific(V2)**

	Value	Comment
Manufacturer ID	0x0374	HYUNDAI TELECOM Co.,Ltd
Product Type ID	0x0001	Country(EU)
Product ID	0x0083	HDL-7390SK

**Notification(V8)**

The Notification CC is implemented as a push only, which means only pushes notification to the controller.

Sequence number is not supported.

Notification Type	Supported notifications		
	Event	State Parameters	Comments
Access Control(0x06)	0x01		User O/C button used to lock the door.
	0x02		User O/C button used to unlock the door.
	0x03		Z-Wave used to lock the door.
	0x04		Z-Wave used to unlock the door.
	0x05		User Keypad used to lock the door.
	0x06		User Keypad used to unlock the door.
	0x09		The Auto Latch time has locked the door.
	0x0B		Lock jammed.
	0x0C		All user codes deleted.
	0x0D		Single user code deleted
	0x0E		New user code added.
	0x0F		New user code not added due to duplicated code.
	0x18		Door knob(key) is open.
	0x19		Door knob(key) is close.
Home Security(0x0A)	0x01		Contact police
	0x02		Contact fire service

**Power Level(V1)**

Can be used under inclusion to test signal strength from the controller and to the device.

### Security(V1)

See Z-Wave documentation.

### Security(V2)

The HDL-7390SK support S2\_ACCESS security class.

### Supervision(V1)

See Z-wave documentation.

### Transport Service(V2)

See Z-Wave documentation.

### User Code(V1)

Lock will accept maximum 10 pin codes that are 4-10 digits in length.

ID 6 : One time Password

- Support Users : 6
- ID Range : 1~6

### Version(V3)

This command Class is used to get information about which version of the different command classes the HDL-7390SK supports and the software version of the HDL-7390SK.

Version Report	
Z-Wave Library Type	ZW_LIB_SLAVE_ENHANCED(0x03)
Z-Wave Protocol Version	0x06(SDK v6.81.06)
Z-Wave Protocol Sub Version	0x07(SDK v6.81.06)

#### 1) Firmware 0 Version

Version of the firmware on the Z-Wave module

Version	Subversion	Comments
1	0	First Release

#### 2) Firmware 1 Version

Version of the firmware on the Host(PDL-1000)

Version	Subversion	Comments
1	0	First Release

### 3) Hardware Version

0x01		HDL-7390SK
------	--	------------

### Z-Wave Plus Info(V2)

Z-WAVE Plus Info	
Role Type	0x07 ROLE_TYPE_SLAVE_SLEEPING_LISTENIGN
Node Type	0x00 NODE_TYPE_ZWAVEPLUS_NODE
Icon Type	0x0300 ICON_TYPE_GENERIC_DOOR_LOCK_KEYPAD
User Icon Type	0x0300 ICON_TYPE_GENERIC_DOOR_LOCK_KEYPAD

### SmartStart

SmartStart enabled products can be added into a Z-Wave network by scanning the Z-Wave QR Code present on the product with a controller providing SmartStart inclusion. No further action is required and the SmartStart product will be added automatically within 10 minutes of being switched on in the network vicinity.

Please Save the QR Code carefully.If both the DSK representation on the product and any DSK provided in the product packaging were to fade,rub off or, be lost,the device would not be able to be added to a Z-Wave network.

You can find the QR code and DSK inside of battery box.

