

Ezlo PlugHub Energy Product Manual

Interoperability statement:

This product can be operated in any Z-Wave™ network with other Z-Wave™ certified devices from other manufacturers. All mains operated nodes within the network will act as repeaters regardless of vendor to increase reliability of the network.

Location of the Security 2 DSK on the Product

The QR code version of the DSK may be found on the back of the product as well as on the packaging.

* Please note DSK code is not accessible from the UI.

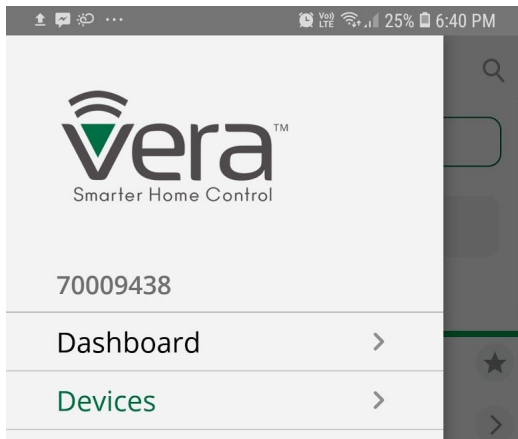
* DSK code is used to set up devices with a Z-Wave network.

Product Classic Inclusion Description

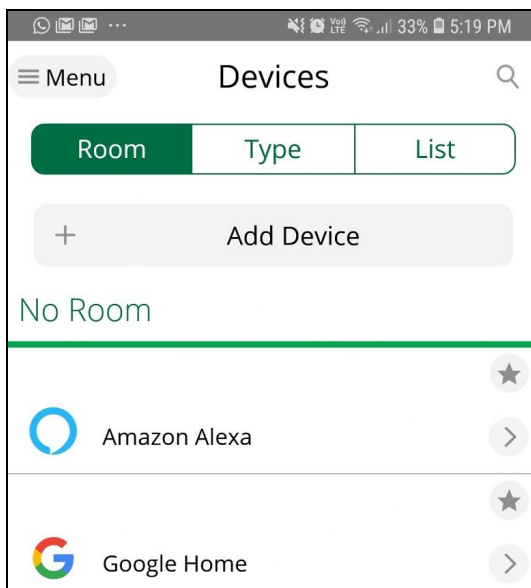
An Online Guide can be found here:

<https://support.getvera.com/hc/en-us/articles/360035597854-Ezlo-Atom-Guide-How-to-Pair-and-Unpair-a-Device>

Open the mobile app, and tap on the three-line icon in the top right corner to open the left-hand-side menu, then select **Devices**.

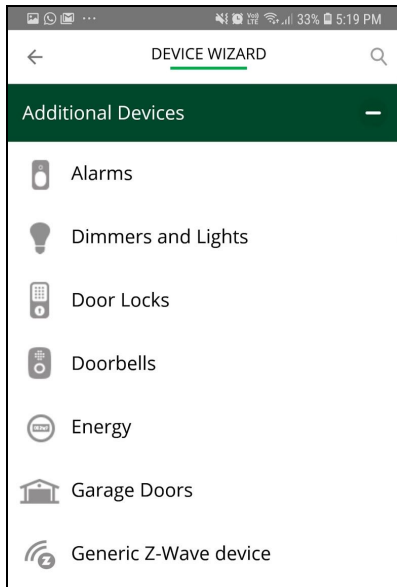


On the device screen, tap on **Add Device**

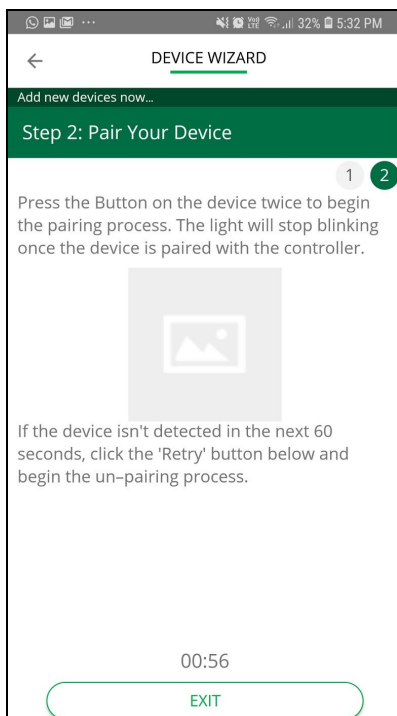


Look for the device you want to pair, once you find it select it from the list. If your device is in the

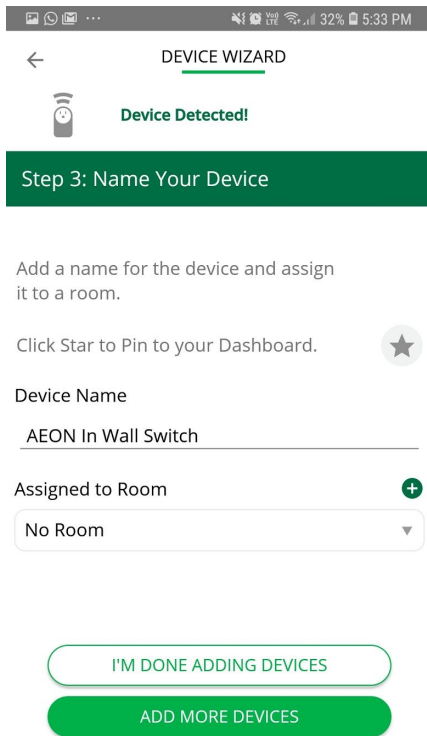
list, you will get a dedicated Device Pairing wizard, which will walk you through the procedure step by step.



The controller it's set into inclusion mode and the message: **Add new devices now...** will appear at the top. The controller sets a 60-second countdown timer, during which it will keep scanning for devices.



Follow the inclusion steps to pair the device. Once your device is detected, you'll get a confirmation pop-up message on the screen, and then you can go on to assign a name and a room for the device. You can tap on **I'm Done Adding Devices** to then wrap up the process, after which point you will see your device in the Devices screen.

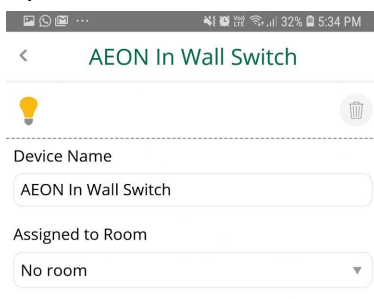


Product Exclusion Description

An Online Guide can be found here:

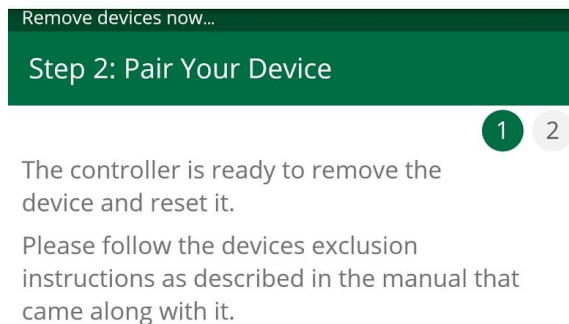
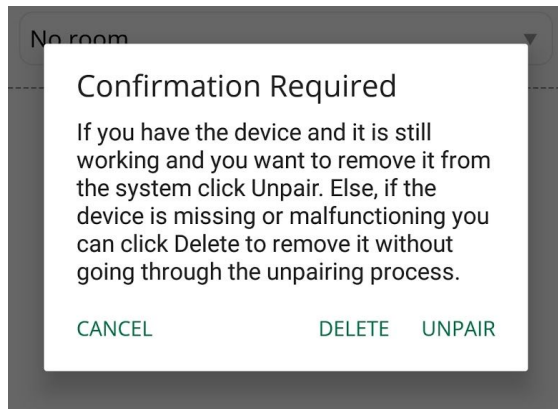
<https://support.getvera.com/hc/en-us/articles/360035597854-Ezlo-Atom-Guide-How-to-Pair-and->

The unit can be taken to exclusion by going to the device which is going to be excluded, then tap on the trash can icon.



Select UNPAIR, which will set the controller into exclusion mode, you will see a message at the top of the screen which says: **Remove device now...**

Unpair should be used if the device is still working and the user wants to remove it from the system. Else, if the device is missing or malfunctioning you can click Delete to remove it without going through the unpairing process.



Follow the instructions to exclude the device, after this process, the device will be removed from the z-wave network and from the UI.

Product Learn Mode Activation

The learn mode is not yet available from the customer UI but it can be triggered by an advanced set of tools.

The Learn Mode can be activated through the API Tool following these steps:

1. Open the API tool going to the link: <https://apitool.ezlo.com/auth>

2. Search for a controller
3. Connect to the controller
4. Once the connection is established, in API Call section select `hub.extensions.plugin.run`
5. Select `HUB:zwave/scripts/start_learn`

Initiate Controller Replication

Follow Device inclusion procedure. Atom will detect that controller is being included and Controller Replication will be started.

Product Factory Reset

1. **Wi-Fi Reset:** Set network settings to factory defaults. With the gateway still plugged into the USB port, **press** the reset button **twice** within a lapse of less than 2 seconds - The status LED will blink twice per second as confirmation.
2. **Soft Reset:** This will remove all the paired devices and reset the user settings, while still remaining on the configured Wi-Fi network - The status LED will blink fast as confirmation. With the gateway still plugged into the USB port for power, **long-press** on the reset button for 7 seconds (or more than 5 but less than 9)
3. **Factory Reset*:** Reestablish all gateway settings to factory defaults. With the gateway still plugged into the USB port, **long-press** the reset button for **more than 10 seconds** - The Status LED will turn ON solid as confirmation.

* If your controller is the primary controller for your network, resetting it will result in the Z-Wave™ devices of your network to stop working and it will be necessary to exclude and re-include all of your Z-Wave™ devices. If this controller is being used as a secondary controller in the network, use this procedure to reset this controller only in the event that the network primary controller is missing or otherwise inoperable.