

For more information...



Consult your User Manual to set up your Smart Home

“This device is a security enabled Z-Wave Plus™ product that is able to use encrypted Z-Wave Plus messages to communicate to other security enabled Z-Wave Plus products.”



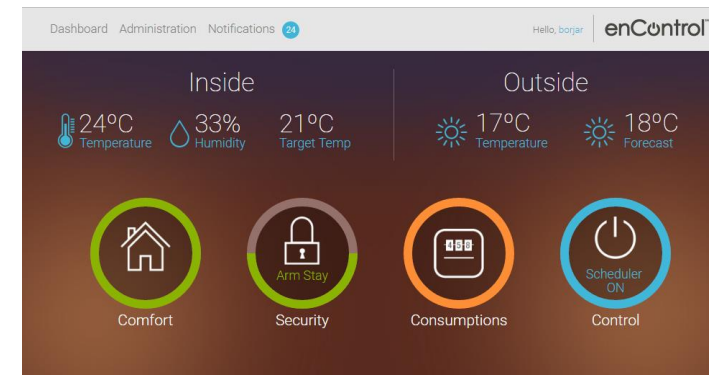
If you have any questions, you can go to our Frequently Asked Questions section on our website at <http://www.encontrol.io/support-area/>



If you have a question or technical problem, you can contact us through the following email address support@sensingcontrol.com, Or open an online ticket through the portal <https://encontrol.freshdesk.com>

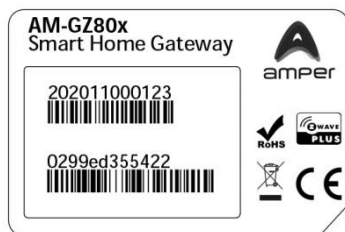


Quick Start Guide For Gateway AM-GZ80x



Pack content

- 1 Gateway enControl AM-GZ80x**
With the device identifiers placed below the gateway



PIN CODE:
38807

- 2 Power supply**



- 3 Cable Ethernet**
To connect your Gateway enControl a free port of your Internet Router.

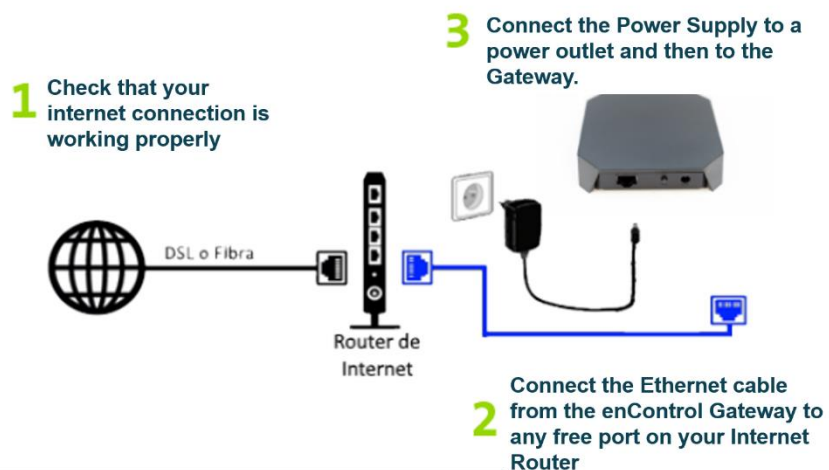


- 4 Full DSK label**
There is a label with the Z-Wave™ full DSK code and QR code.



Pre-installation

In order to use the service in Control you need to connect your equipment and devices. This process has three steps:



- 1 Check that your internet connection is working properly
- 2 Connect the Ethernet cable from the enControl Gateway to any free port on your Internet Router. Do not connect this cable to your Router's WAN port even if it is free.
- 3 Connect the Power Supply to a power outlet and then to the Gateway. The gateway has no power button: it will only turn on automatically.

That is all! Once the Gateway is connected as shown in the previous image, you can now access enControl to configure your system and enjoy your new Smart Home as explained in your User Manual. Remember that you can access enControl using your preferred web browser and connecting to the <https://encontrol.io> page and using your username e and password.