

# SMARTCODE 912

TOUCHPAD ELECTRONIC LEVER

## Installation and User Guide

### Required tools

4 AA Batteries Ruler Phillips head screwdriver

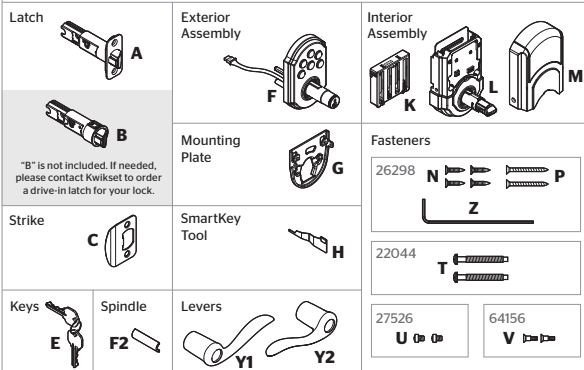
### Additional Tools (depending on application)

Hammer Wood block

### Kwikset Technical Support

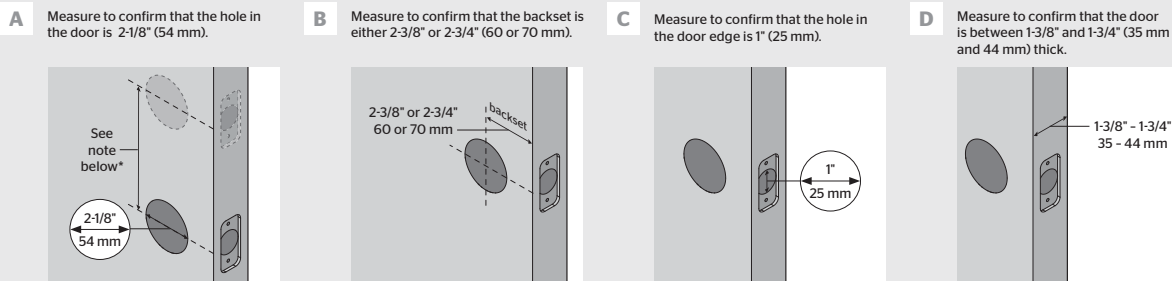
1-866-863-6584  
www.kwikset.com

### Parts in the box

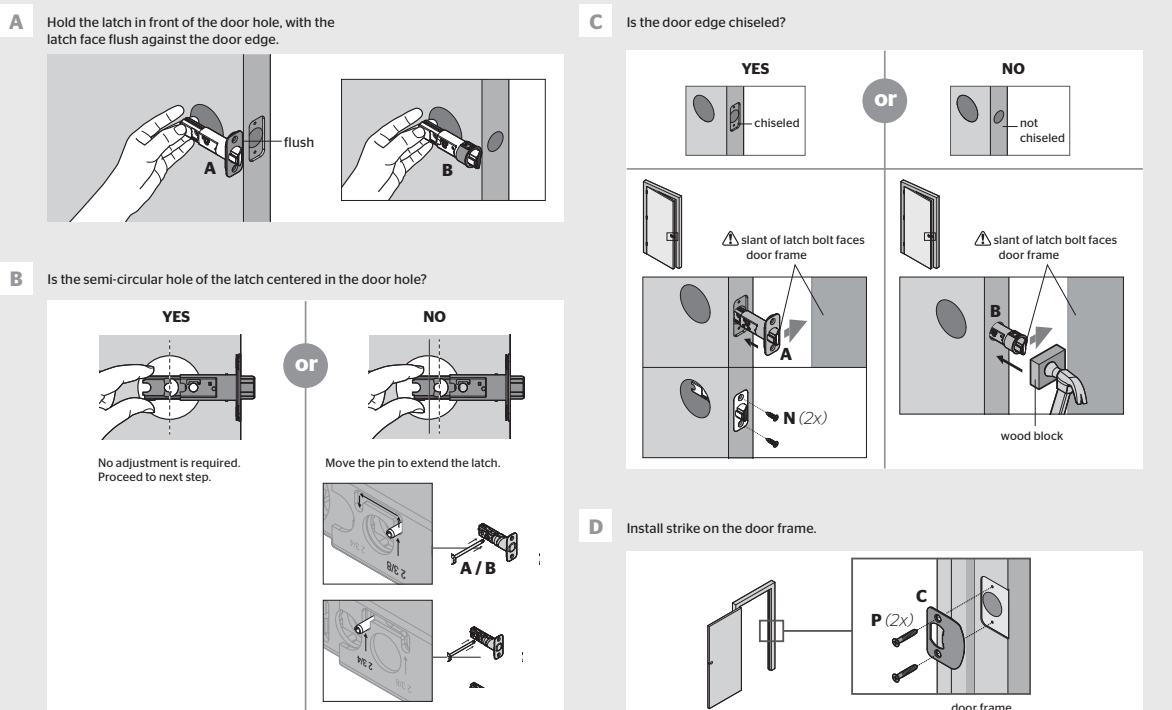


## 1 Prepare the door and check dimensions

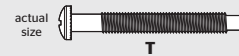
If drilling a new door, use the supplied template and the complete door drilling instructions available at [www.kwikset.com/doorprep](http://www.kwikset.com/doorprep).



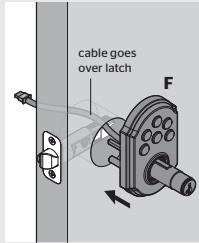
## 2 Install the latch and strike



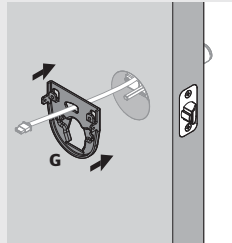
### 3 Install the exterior keypad, mounting plate, and spindle



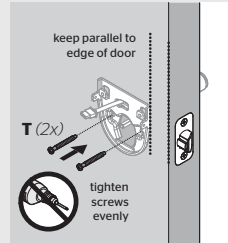
#### A Install exterior keypad.



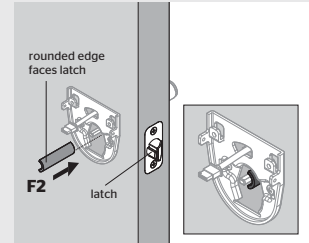
#### B Route cable through mounting plate.



#### C Secure mounting plate with supplied screws.



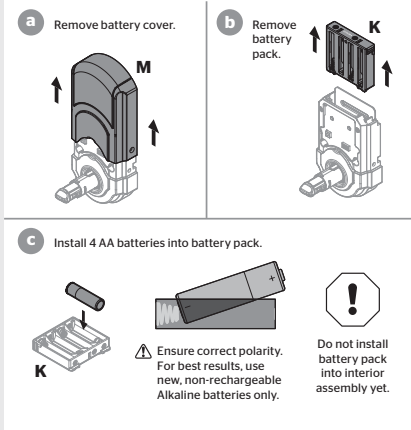
#### D Install spindle.



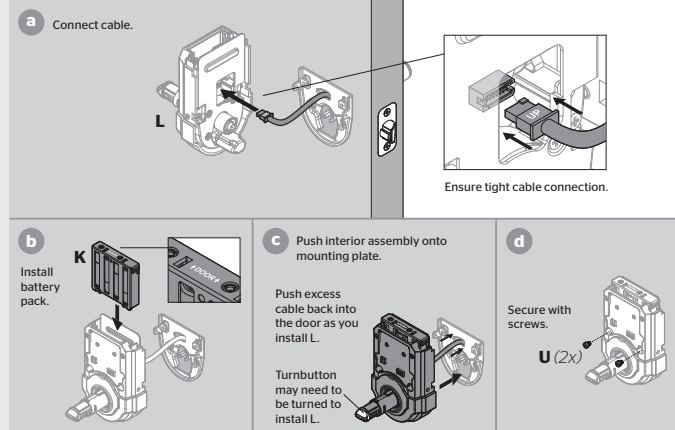
### 4 Install interior assembly



#### A Remove battery cover and battery pack from interior assembly.

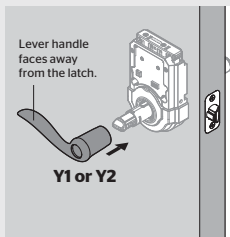


#### B Install interior assembly onto mounting plate.

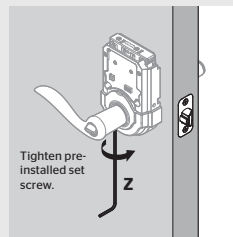


### 5 Install levers

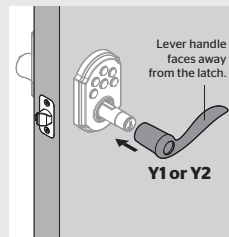
#### A Install interior lever.



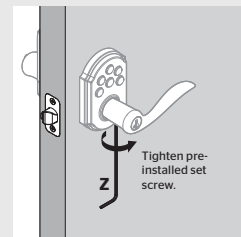
#### B Secure interior lever.



#### C Install exterior lever.



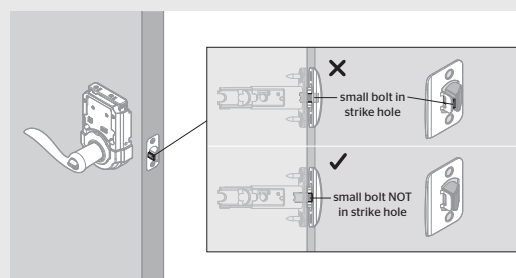
#### D Secure exterior lever.



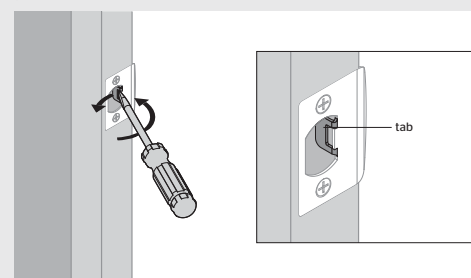
### 6 Test latch operation

Close door, test latch operation and make adjustments as needed:

The small bolt of the latch should not enter the strike hole. If it enters the strike hole, reposition strike.



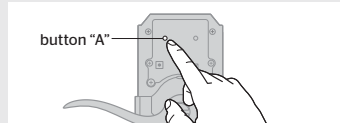
If latch is loose in the strike, adjust the strike tab so it grips the latch bolt better when the door is closed.



## 7 Add the lock to your smart home system

**A** Initiate the process to add the lock to your system at your smart home controller. Refer to your smart home system instructions for more information.

**B** When prompted by your smart home system to add the lock, press button "A" on the lock interior one time. The red LED will illuminate when the lock enters Add Mode.



Please allow time for the controller to add the lock.

**C** If successful, re-name the lock in your system (if applicable).

**D** If unsuccessful, follow your system's instructions to remove the lock from the controller and any other network, then press button "A" on the lock one time. Perform steps 7A-7C again.

If still unsuccessful, consult the Programming and Troubleshooting Guide on the SmartCode 912 page at [www.kwikset.com](http://www.kwikset.com).

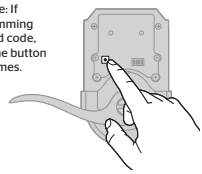
## 8 Add user codes (30 max)

It is recommended that you add and delete all user codes through your smart home control system. If your system does not allow this, codes may be added directly to the lock as shown here.

**Programming Timeout**  
If no button is pressed for 5 seconds, the system will time out and you will need to restart the procedure.

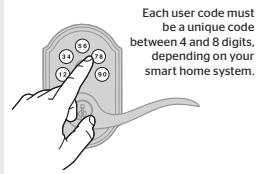
**A** Make sure the door is open. Press the Program button the number of times that corresponds to the user code position being programmed.

Example: If programming the third code, press the button three times.

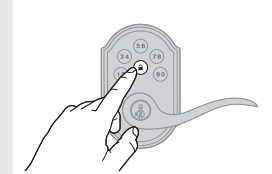


**B** Enter user code. A total of 30 user codes may be programmed.

Each user code must be a unique code between 4 and 8 digits, depending on your smart home system.

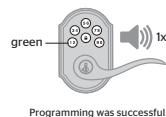


**C** Press Lock button once.



**D** What lights and sounds does the lock produce?

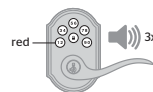
**One green flash with one beep\***



Programming was successful.

or

**Three red flashes with three beeps\***



Programming was unsuccessful.

Make sure the user code is not a duplicate and that it is between 4 and 8 digits during your next attempt.

or

**Two beeps\***



Programming time out.

Make sure not to pause for more than 5 seconds during programming.

\*Beeping sound will only be heard if switch #3 (on the lock interior) is in the on position. See "Switches and Status LED Colors" on page 4.

### Mastercode

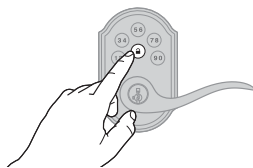
For enhanced security, a mastercode may be used when adding and deleting user codes. For more information about the mastercode, download the Programming and Troubleshooting Guide on the SmartCode 912 page at [www.kwikset.com](http://www.kwikset.com).

## 9 Test the lock (review normal operation)

Confirm that the code(s) added in previous step can unlock the door.

### Locking the Door

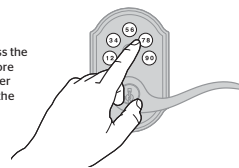
Press Lock button once.



### Unlocking the Door

Enter user code.

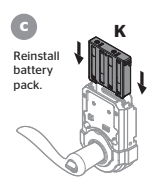
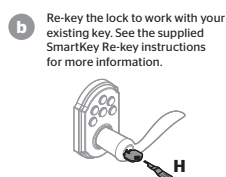
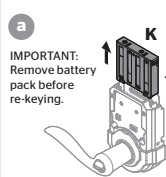
Tip: You can press the Lock button before entering your user code to light up the keypad at night.



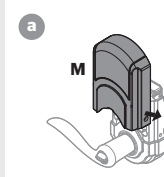
## 10 Re-key the lock (if needed) and install the battery cover



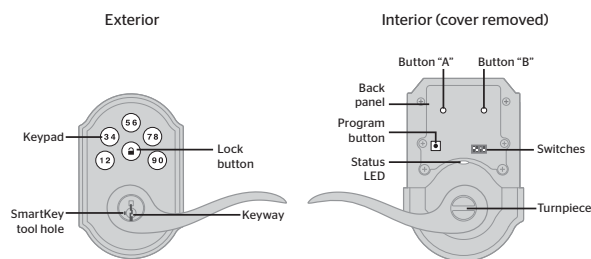
**A** Re-key the lock (if needed).



**B** Install the battery cover.



## SmartCode at a Glance



## System Alerts

Alert	Reason	Solution
Keypad flashes red 1 time with 1 beep*	Door jammed while attempting to lock.	Manually re-lock door. If needed, reposition strike.
Keypad flashes red 3 times with 3 beeps*	Unsuccessful programming.	Attempt programming procedure again.
	One incorrect code entered.	Re-enter code.
	No user code programmed.	Program at least one user code.
Keypad flashes red 10 times with 10 beeps*	Low battery.	Replace batteries.
Lock beeps 2 times.	Programming timeout.	Attempt programming procedure again, making sure not to pause for more than 5 seconds.
Keypad flashes red 3 times.		
Keypad flashes red 6 times with 6 beeps*.		
Keypad flashes red 15 times with 15 beeps*	Three incorrect codes entered within one minute.	Re-enter code after 60 second keypad lockout.

\*Beeping sound will only be heard if switch #3 is on.

## Switches and Status LED colors

Switches

1 2 3 4

Status LED

Switch	Function
1	Door lock status LED blinks every 6 seconds
2	Lock automatically re-locks door 30 seconds after unlocking. Disabled if no codes are programmed.
3	Audio
4	Not used.

Color	Lock Status
Green	Unlocked
Amber	Locked
Red	Low battery

## Deleting a user code

In order to delete a user code, you must override the code by adding a different user code in the same position. For example, if you want to delete the third code, add a different user code in position three.

⚠ Test the old user code to make sure it can no longer unlock the door.

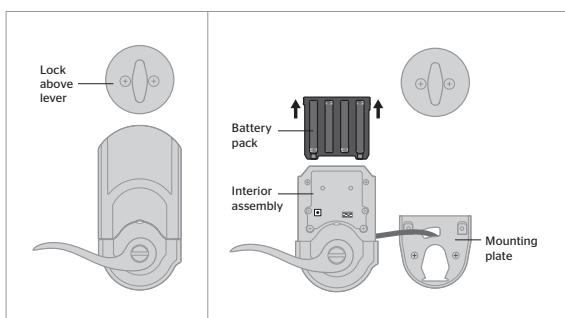
If you cannot remember the user code position, you may wish to perform a factory reset to delete all codes associated with the lock.

## Troubleshooting

A complete Programming and Troubleshooting Guide is available on the SmartCode 912 page at [www.kwikset.com](http://www.kwikset.com).

## Battery Replacement

If another lock is installed above the lever, remove the interior assembly when battery replacement is required.



## Factory Reset

A factory reset will delete all codes associated with the lock, and it will remove it from your smart home system.

1 Remove battery pack.

2 Press and HOLD the Program button while reinserting the battery pack. Keep holding the button for 30 seconds until the lock beeps and the status LED flashes red.

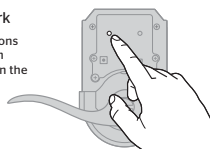
3 Press the Program button once more. When the LED flashes green and you hear one beep, the lock has been reset.

4 Pair the lock with your smart home system, and add user codes to your lock.

## Network Information

### Removing the lock from the network

Follow your smart home system's instructions to remove the lock from the network. When prompted by the system, press button "A" on the lock interior once.



### Z-Wave System Notes

This product is a security enabled Z-wave Plus product and must be used with a Security Enabled Z-Wave controller to be fully utilized. Z-Wave is a "Wireless mesh network," and results may vary based on building construction and communication path.

To assure interoperability, each Z-Wave product must pass a stringent conformance test to assure that it meets the Z-Wave standard for complete compliance with all other devices and controls. The Z-Wave identity mark assures consumers, integrators, dealers and manufacturers that their products will reliably perform with any other Z-Wave device. And, regardless of the vendor, always powered nodes may act as a repeater for Kwikset/Weiser/Baldwin products.

Z-Wave Configuration and Association Parameters are available on the SmartCode 912 page at [www.kwikset.com](http://www.kwikset.com).

## Important Safeguards

1. Read all instructions in their entirety.
2. Familiarize yourself with all warning and caution statements.
3. Remind all family members of safety precautions.
4. Protect your user codes and mastercode.
5. Dispose of used batteries according to local laws and regulations.

⚠ **CAUTION:** Prevent unauthorized entry. Since anyone with access to the back panel can change the user codes, you must restrict access to the back panel and routinely check the user codes to ensure they have not been altered without your knowledge. The use of a mastercode can help protect your system's settings.

⚠ **WARNING:** This Manufacturer advises that no lock can provide complete security by itself. This lock may be defeated by forcible or technical means, or evaded by entry elsewhere on the property. No lock can substitute for caution, awareness of your environment, and common sense. Builder's hardware is available in multiple performance grades to suit the application. In order to enhance security and reduce risk, you should consult a qualified locksmith or other security professional.



## 1. Association Groups

The lock supports 2 association groups. Per Z-Wave Plus requirements, group 1 is assigned to the **Lifeline** group and can only support 1 node.

The **Lifeline** group supports the following unsolicited messages:

<b><u>Command Class</u></b>	<b><u>Command</u></b>
<b>Command Class Battery</b>	Battery Report
<b>Command Class Door Lock</b>	Door Lock Operation Report
<b>Command Class Notification</b>	Notification Report
<b>Command Class Device Reset Locally</b>	Device Reset Locally Notification

Association group 2 is identified as the “**Doorlock notify report**” group. It allows at most 5 other nodes to be associated with the lock and will provide all Notification Reports, via the Command Class Notification, generated by the lock.

## 2. Configuration Parameters

The Z-Wave door lock module supports the use of the configuration command class to provide advanced configuration of the door lock over the Z-Wave network. This section describes the configuration parameters supported by the door lock.

### 2.1 Configuration Parameters 1 through 30

Parameter Name: User Code Type

Data Length: 1 byte

Default Value: 1 (Owner)

Possible Values: 0x01 (owner), 0x03 (Guest), 0x04 (Worker)

Description:

Configuration parameters 1 through 30 are a one byte field used to set the type of user for their corresponding user code. The following table shows the valid values for user code types:



<b><u>Parameter Value</u></b>	<b><u>Description</u></b>
<b>0x00</b>	Reserved
<b>0x01</b>	Owner (Default)
<b>0x02</b>	Reserved
<b>0x03</b>	Guest (required for Year/Day schedules)
<b>0x04</b>	Worker (required for week day schedules)
<b>0x05 – 0xFE</b>	Reserved
<b>0xFF</b>	No User Code assigned

The door lock will only retain valid user code types (0x01, 0x03, and 0x04). All other values will be ignored. If a user code does not exist for the corresponding configuration parameter, the lock will report a value of 0xFF. Any attempts to change the user code for a non-existent user will be ignored.

A user code can only be set to one user code type at a time and, as indicated in the table above, user code types are associated with Schedule Entry Lock CC schedule types. This association between user code type and entry schedule type correlates to the Schedule Entry CC specification in that only one schedule type (week day or year day) may be associated with a user code at any time. Note: This does not prohibit a user code from having multiple schedules of the same type (Year Day or Week Day).

By default all user codes are assigned type “Owner” when created. The type “Owner” designation indicates that that user code is active at all times. When an entry schedule is created for a user code, the associated user code type will automatically change depending on the type of schedule created. Example: If a weekday schedule is created for a user code the associated user code type will change to “Worker”. If a year day schedule is created for a user code the associated user code type will change to “Guest”.

If a user code is of type “Worker” or “Guest” it must have an enabled entry schedule to have access to the lock. If a user code of type “Worker” or “Guest” does not have an enabled schedule or if there are no entry schedules defined the associated user code will not be given access by the lock.

To provide the user code access to the lock the system must perform one of three actions:

- Re-enable the entry schedule for the user code that was previously disabled
- Create a new entry schedule for the user code
- Change the user code type to “Owner”



**WARNING:** If a user code is of type “Worker” or “Guest” and the system changes the user code type to “Owner” the associated user code will be given access to the lock 24/7 regardless of any entry schedules defined for the user in the lock.

## 2.2 Configuration Parameter 31

Parameter Name: Dipswitch Settings

Data Length: 1 byte

Default Value: 5 (Buzzer enabled and Lock Status LED enabled)

Possible Values:	0	all features disabled
	1	Lock status LED enabled
	2	Autolock enabled
	4	Internal buzzer Enabled
	3	Auto lock & Lock status LED enabled
	5	Internal buzzer and Lock status LED enabled
	7	All features enabled

### Description:

Configuration parameter is a one byte read only bit mask that returns the state of the user accessible dipswitches on the rear panel of the door lock.

The following table shows the definition for the bits being used in the returned value:

Bit	Description
<b>0 (0x01)</b>	Lock status LED (1:enabled)
<b>1 (0x02)</b>	Autolock setting (1:enabled)
<b>2 (0x04)</b>	Buzzer (1:enabled)
<b>3 (0x08)</b>	Special function depending on lock type

## 2.3 Configuration Parameters 33 and 34

Parameter Name: SKU (length = 8 bytes)

Data Length: 4 bytes (each parameter)

Default Values for 33 and 34: 32, 32, 32, 32 (all spaces)

Possible Values: From 32 to 126 (All printable characters will be accepted)



Description:

The configuration parameters 33 and 34 are used to set and get the SKU part numbers. The SKU is made up of 8 bytes. Each parameter consists of four bytes of data. Parameter 33 contains the first four most significant bytes of the SKU, while parameter 34 contains the four least significant bytes of the SKU.

When setting the SKU, it must be done in two set commands, one for each parameter. The order of programming the SKU does not matter.

Setting parameter 33 will program the first four bytes of the SKU. Setting parameter 34 will program the last 4 bytes of the SKU. Most printable values are accepted for the set command.

When getting the SKU, it must be done in two get commands, one for each parameter. The order of getting the SKU does not matter.

Getting parameter 33 will retrieve the first four bytes of the SKU. Getting parameter 34 will retrieve the last 4 bytes of the SKU.

## **2.4 Configuration Parameter 40**

Parameter Name: Reset Lock to Factory Default

Data Length: 1 byte

Default Value: 0

Possible Values: 1 – have lock perform factory reset

Description:

The configuration parameter 40 is a one byte field, used to set the lock to its default setting, known as a factory reset command.

Reading this parameter will always return a value of 0.

Writing a value of 1 to this parameter will cause both the lock and Z-Wave card to reset back to their default settings and will remove itself from the network. All network information, including associations will be cleared.

## **3. Inclusion Procedures**

1. Power the lock by placing the battery pack into the lock
2. On the controller, select the option to add a device.
3. On the lock, press button 'A'. The red LED will illuminate until the add request has been processed.





## 4. Exclusion Procedures

1. Power the lock by placing the battery pack into the lock
2. On the controller, select the option to remove a device
3. On the lock, press button 'A'. The red LED will illuminate until the removal request has been processed.

## 5. Reset Procedures

**A factory reset will delete all codes associated with the lock and will remove it from your smart home system. It will not remove any anti-theft settings.**

**Please use the local reset procedure only when the primary controller is missing or inoperable.**

### 5.1 Local

1. Remove battery pack and press the program button a few times to discharge.
2. Press and hold the program button.
3. Replace the battery pack.
4. Continue holding the program button for 30 seconds until the lock beeps and the state LED flashes red.
5. Press the program button again. The status LED will flash green.
6. When the cycle of red and green flashes ends, the reset has completed.
7. Wait for the lock to reboot.

### 5.2 Remotely

1. From a controller, write a 0x01 to configuration parameter 40.
2. When the cycle of red and green flashes ends, the reset has completed.
3. Wait for the lock to reboot.