

INSTALLATION GUIDE



LOCKLY GUARD™ DUO (679D)

**Interconnected Smart Lock
Z-Wave Edition**

PGD679DZSN

PGD679DZMB

For commercial use & professional
installation



Intertek

Control No. 5026048

LOCKLY PRO

www.LocklyPRO.com

GET THE MOST OUT OF YOUR LOCKLY GUARD™

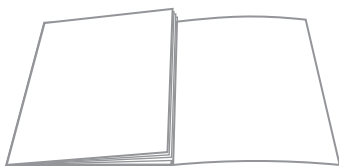
Get the latest **user/installation manuals** , instructional videos, and FAQs



SCAN or VISIT
locklypro.com/installation-and-manuals

Welcome!

This guide will walk you through step-by-step how to install and get Lockly Guard™ up and running. Installation generally takes less than 30 minutes. If you have any questions please call our Customer Service Hotline (510) 288-9928 for help.

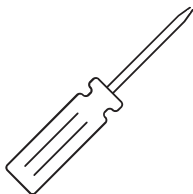


Reference installation parts overview foldout on back page

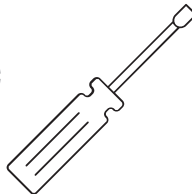
Preparation

To complete the installation you will need:

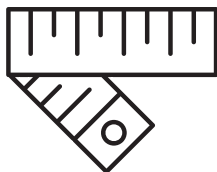
Phillips Screwdriver



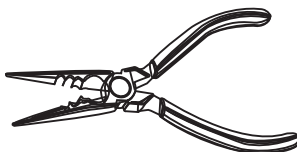
Flathead Screwdriver



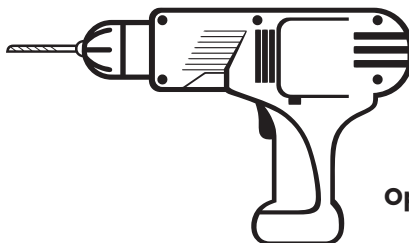
Tape measure or ruler



Vise



Screwdriver with drill bits

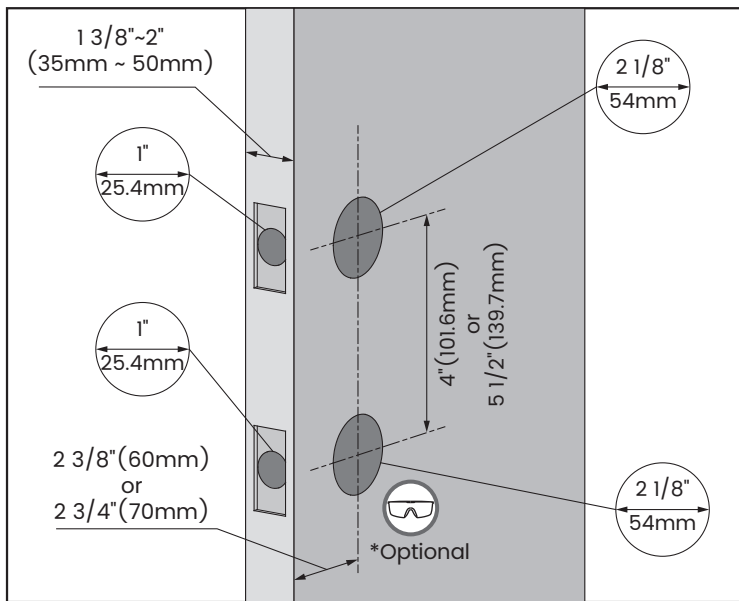


Optional

Drilling maybe required to install this lock. If you are installing your lock on a brand new door, a drill is required if there are no holes prepared for lock installation. Use provided template to bore holes on door.

Preparation continued

Remove existing door hardware, latch or deadbolts before installing the new lock. **Use provided template to bore new holes if needed.**



- 1 Measure and confirm your door is between $1\frac{3}{8}" \sim 2"$ (35mm ~ 50mm).
- 2 Measure and confirm the hole in the door is $2\frac{1}{8}"$ (54mm).
- 3 Measure and confirm that the backset is between $2\frac{3}{8}"$ (60mm) to $2\frac{3}{4}"$ (70mm).
- 4 Measure and confirm that hole in the door edge is $1"$ (25.4mm).
- 5 Measure and confirm that distance between front door holes is $4"$ (101.6mm) or $5\frac{1}{2}"$ (139.7mm)



IMPORTANT

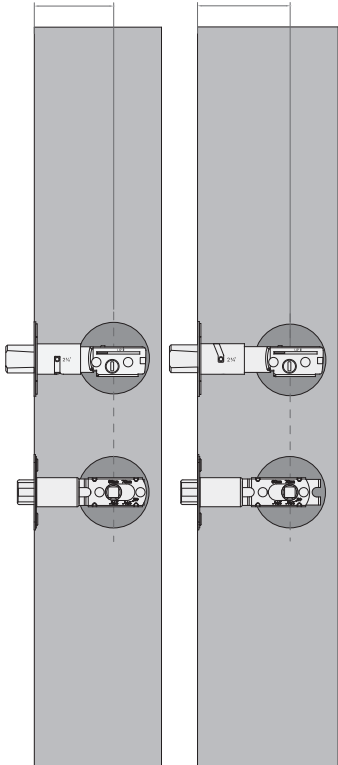
* Use goggles to protect eyes if you need to drill door holes.

Step 1

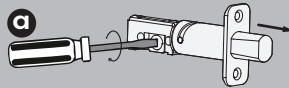
INSTALLING THE LOCKSET

- 1** Measure the distance between center of front door hole to the edge of your door hole to determine the backset. Adjust Latchbolt **F** and Deadbolt **J** according to the backset of your door.

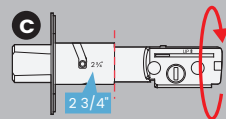
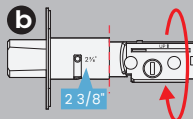
2 3/8" (60mm) 2 3/4" (70mm)



Deadbolt Adjustment **J**



a. Before adjusting the backset to 2 3/8" (60mm) or 2 3/4" (70mm), extend the deadbolt by inserting a flat-head screwdriver into the slot and turning it.

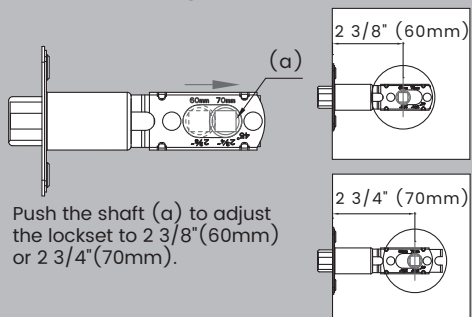


b. To adjust hold the faceplate and twist the body counter-clockwise until it snaps to 2 3/4" (70mm).

c. To adjust hold the faceplate and twist the body clockwise until it snaps to 2 3/8" (60mm).



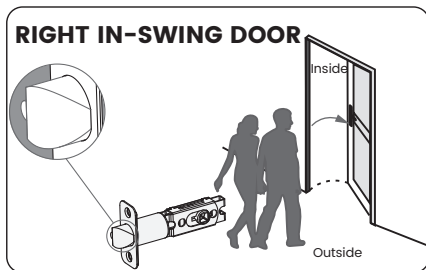
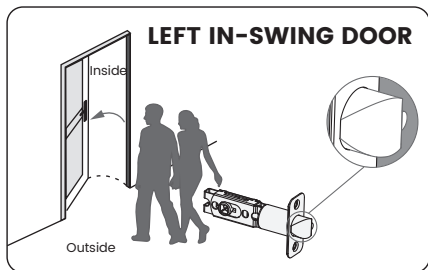
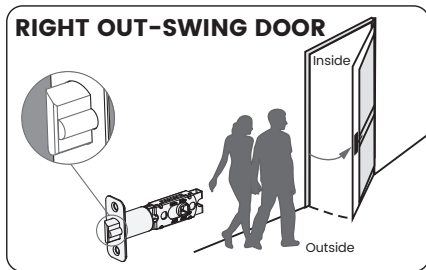
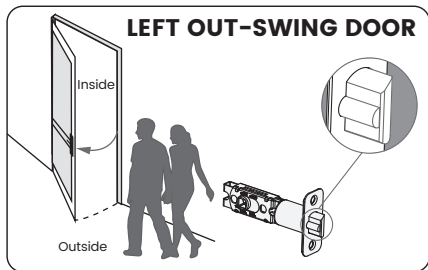
Latchbolt Adjustment **F**



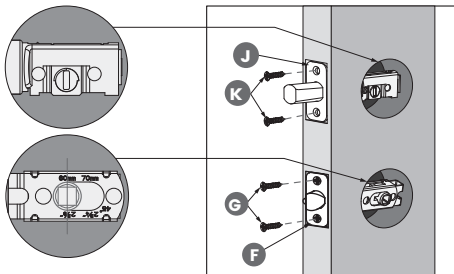
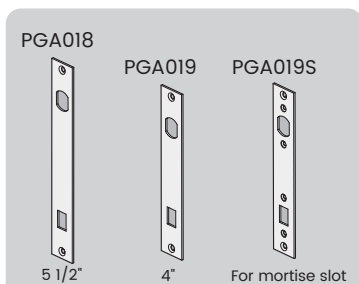
Push the shaft (a) to adjust the lockset to 2 3/8" (60mm) or 2 3/4" (70mm).

Note: the shaft's horizontal and vertical alignment must be sustained during installation to ensure latch will fully extend and lock securely.

- After adjusting the Latchbolt **F**, determine the orientation of the latchbolt. Determine the orientation of latchbolt. Facing the door exterior, install the latchbolt according to the opening direction of your door.



- Install Deadbolt **J** (**top**) and Latchbolt **F** (**bottom**) to door and secure with Screws **K** and **G**. Stick out deadbolt, make sure bore hole is perpendicularly positioned and the spindle shaft is centered.

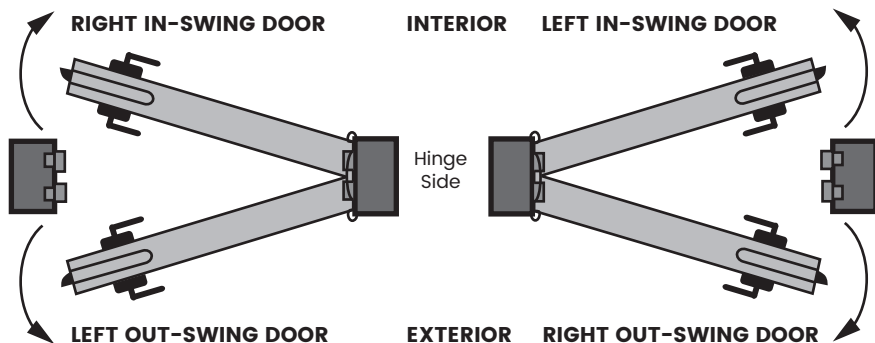


Optional: Stainless steel mortise slot cover, 4" or 5 1/2" Face Plates available. To purchase, please call our Customer Service hotline (510) 288-9928 or email prosales@lockly.com

Step 2

CHANGING HANDLE FOR RIGHT OR LEFT SWING DOORS

The lock ships with handle default for right in-swing or left out-swing door. Check the diagram below if you are unsure of your door orientation.

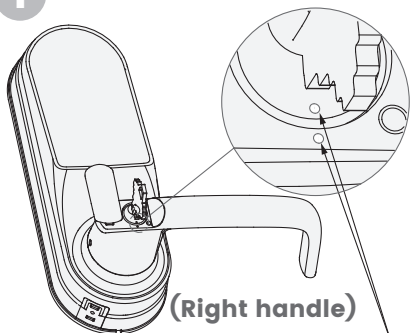


No need to change door handle orientation. Skip Step 2.

LEFT IN-SWING and RIGHT OUT-SWING DOORS require changing the door handle orientation. Continue to follow Step 2 to change exterior and interior door handle orientation.

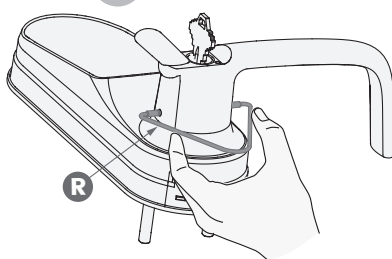
Changing the Exterior Handle Orientation

1



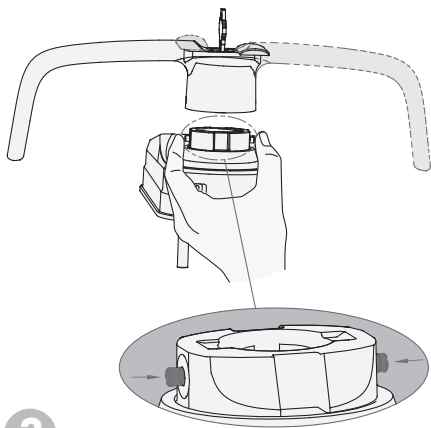
(Right handle)
Insert key and rotate so that the two white dots align as shown.

2



Use the provided pin insert **R** to press the metal pins located at the 3 o'clock and 9 o'clock positions on the base handle. Remove the handle once the pins are compressed.

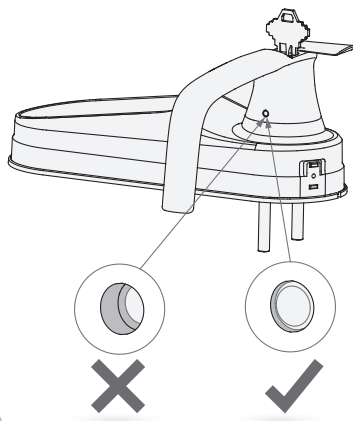
Step 2 continued CHANGING HANDLE FOR RIGHT OR LEFT SWING DOORS



3

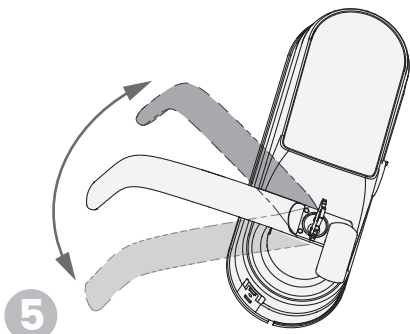
Rotate the handle 180° to the other side of the lock.

Using your fingers, press the two pins located on the left and right side of the the lock to insert the handle back onto the lock.



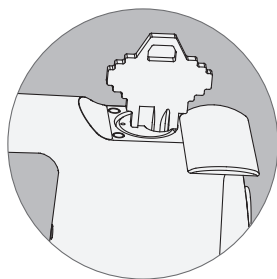
4

Confirm that your installation was complete by checking if the pins are flush against the handle, and has popped out. Adjust the handle accordingly to make sure the pins are fully decompressed and sits flush against the surface.



5

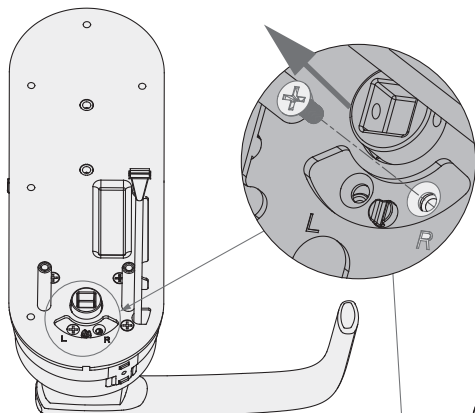
Check that your handle works smoothly by giving it a turn up and down.



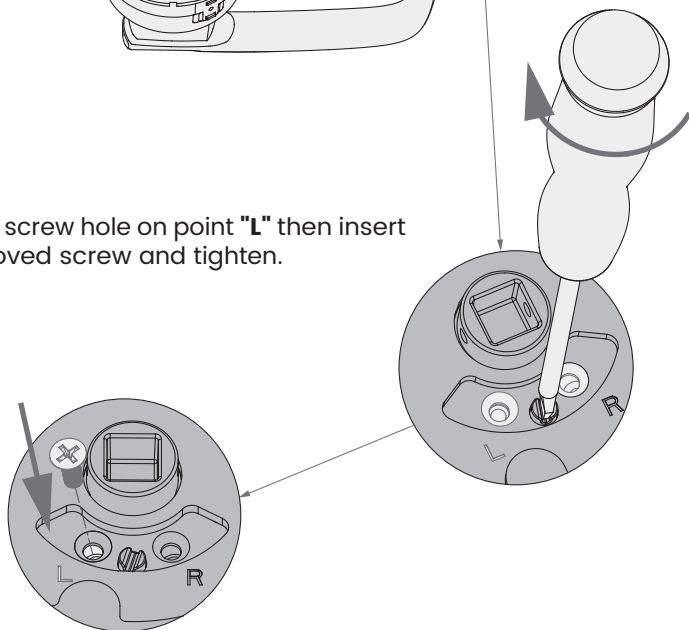
6

Twist key back to horizontal position. The key can be taken out once it goes back to the horizontal position.

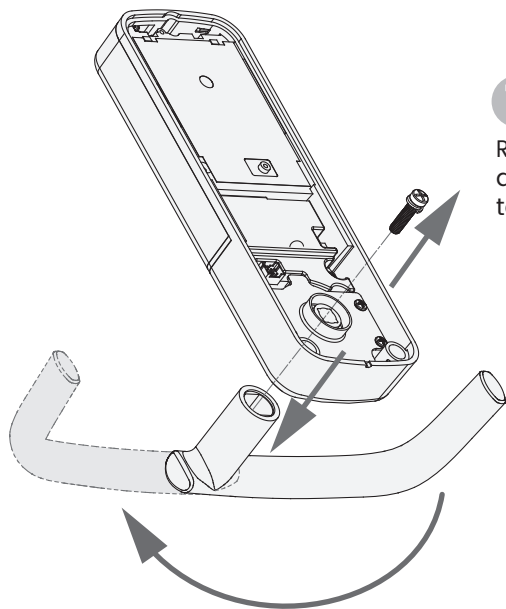
- 7** At the back of the exterior assembly, remove the screw on point "R".



- 8** Align the screw hole on point "L" then insert the removed screw and tighten.

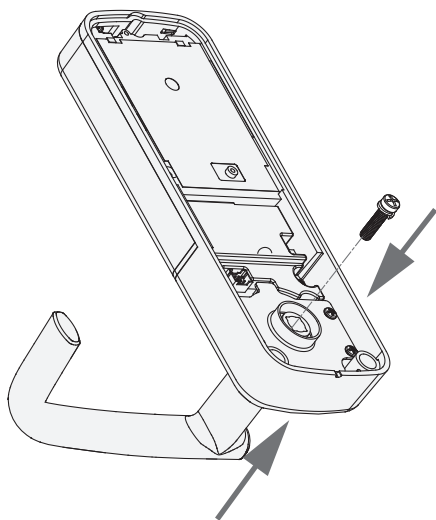


Changing the Interior Handle Orientation



1

Remove the handle retaining screw and detach the handle. Rotate it to 180° then return as shown.



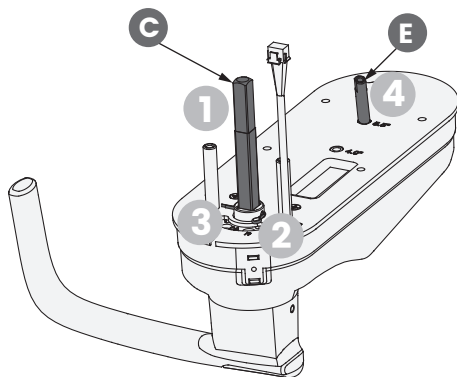
2

Insert the handle retaining screw and tighten using a screw driver.

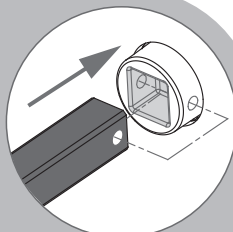
Step 3

PREPARING LOCK FOR INSTALLATION

Carefully prepare the lock and ensure the required parts (**C** , **D** , **E**) have been properly attached before installing to door.

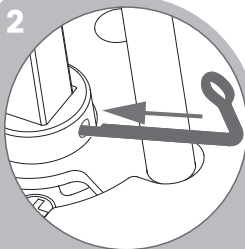


1



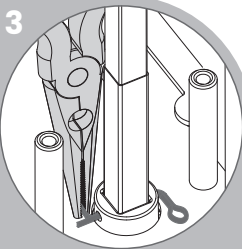
Install Spindle **C** with the holes side into the base of the lock and align the holes locate in the 3 o'clock and 9 o'clock position.

2



Insert locking pin **D** in to the hole as shown above.

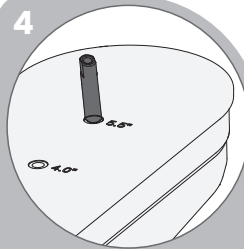
3



Carefully bend the end of the locking pin **D** with a needle nose pliers.

Failure to bend the locking pin and turn the handle freely without obstruction will result to mal-function.

4

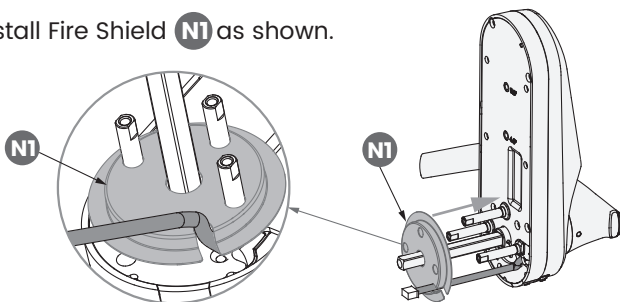


Insert Slotted Barrel Extension **E** to upper hole of the exterior assembly. Use pliers to securely tighten **E** clockwise.

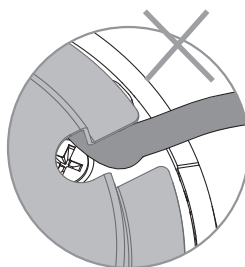
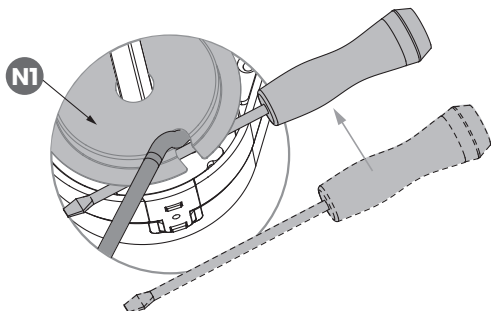
Step 4

INSTALLING THE LOCK (EXTERIOR)

- 1 Install Fire Shield **N1** as shown.

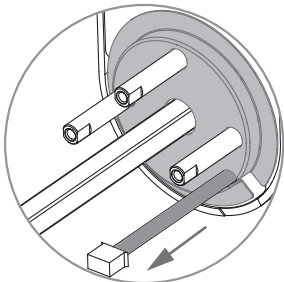


- 2 Insert a screwdriver under the fire shield to support while carefully routing cable to the U-shaped notch.

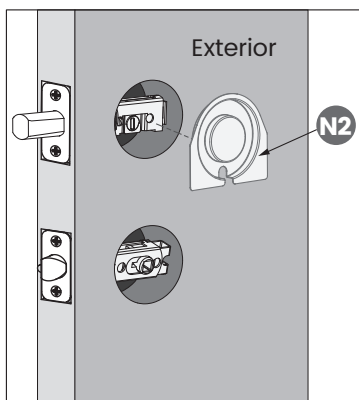


IMPORTANT: CABLE SHOULD NOT BE PRESSED OR PINCHED UNDER THE SHIELD.

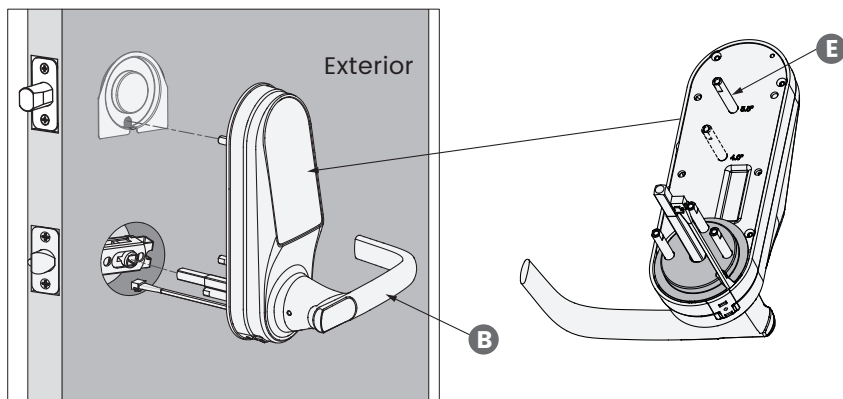
- 3 Pull the cable towards the direction of the arrow.



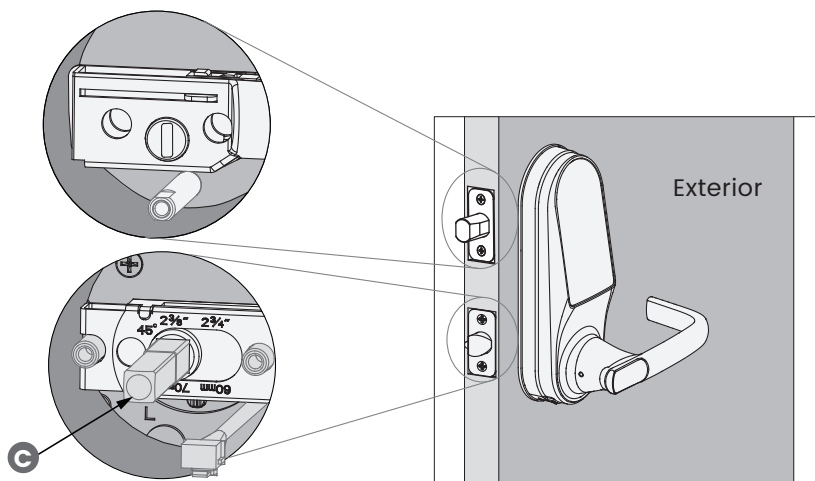
- 4 Install the Fire Shield **N2** on the door exterior the Deadbolt **J**.



- 5** While aligning the lock straight up-and-down, pass the cable under the Latchbolt **F** then ensure the Slotted Barrel Extension **E** passes through the hole on the lower part of the Deadbolt **J** body as shown:



- 6** Pass the Spindle **C** through the center of the latchbolt, and the round rods through the sides in their respective holes. **The cable should run underneath the lockset.**

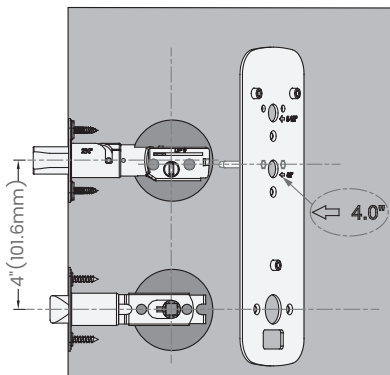


- 7** Check lock alignment and ensure the lock is sitting flat and aligned straight.

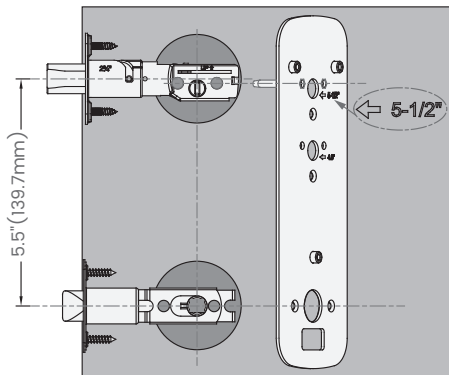
Step 5

INSTALLING THE LOCK (INTERIOR)

- 1 Select Interior Mounting Plate **U1** or **U2** according to door hole distance and install on to door.

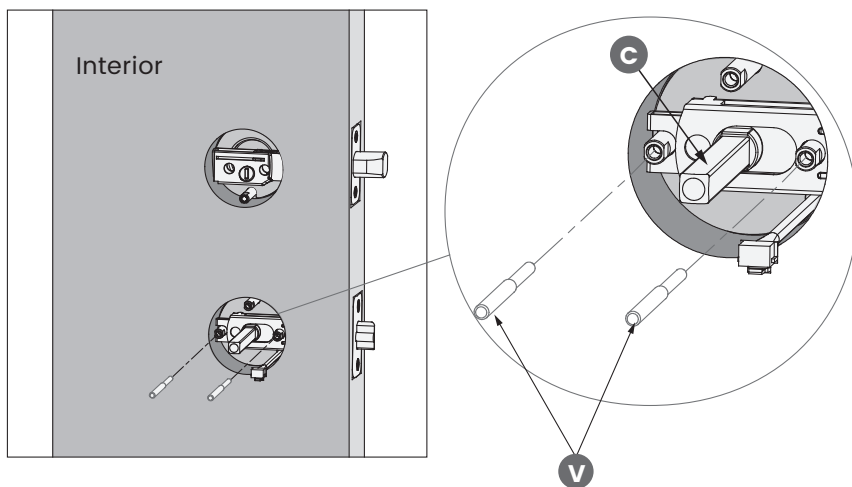


4" mounting plate

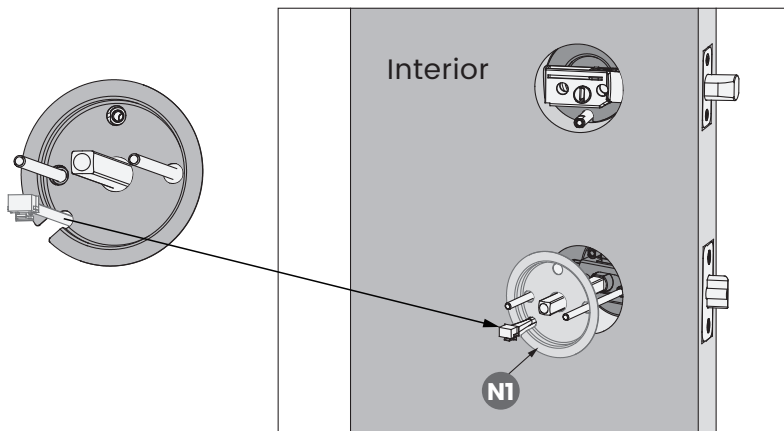


5 1/2" mounting plate

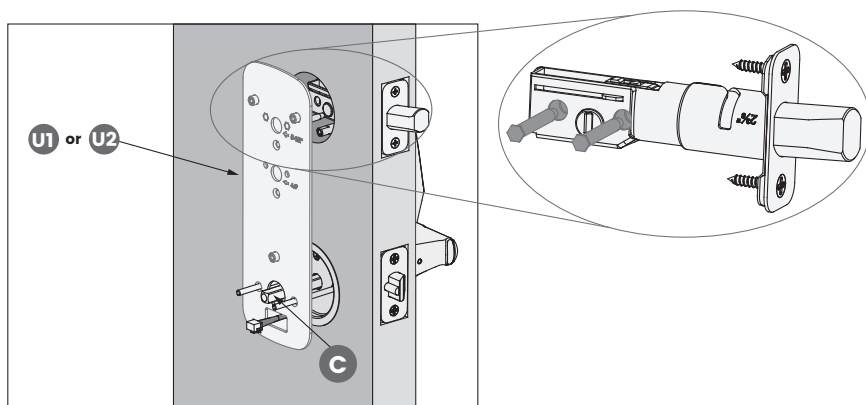
- 2 Insert Positioning Rods **V** into the holes to the left and right of the Spindle **C**. The holes are located at the 3 o'clock and 9 o'clock positions.



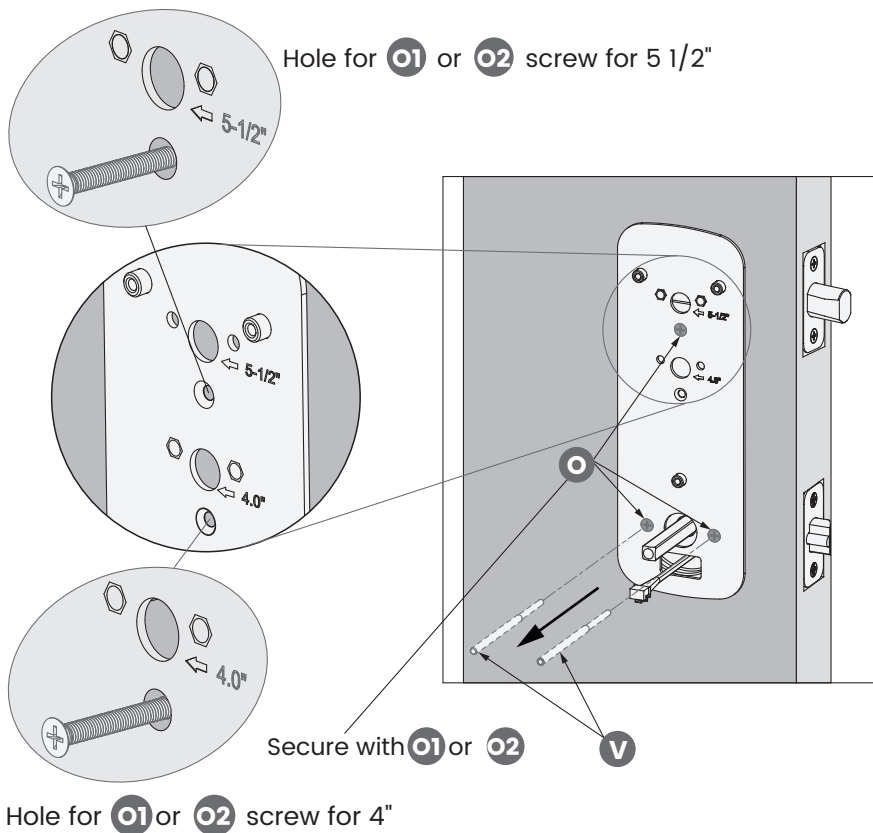
- 3 Install Fire Shield **N1** as shown. Ensure that the cables are routed out of the U-shaped slot and the fire shield is not pinching the cable.

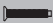


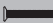
- 4 Ensure the rods on Interior Mounting Plate **U1** or **U2** is inserted on the holes of the deadbolt and the cable and Spindle **C** passed through the mounting plate.



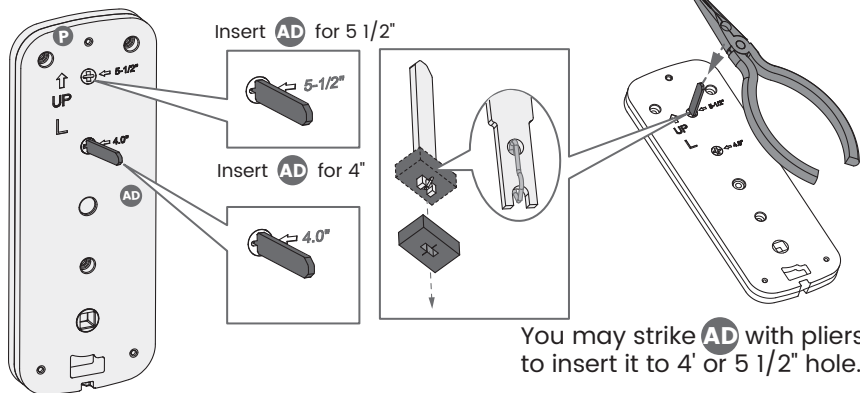
- 5 Secure Interior Mounting plate **LK** with Screws **O**, Remove the Position Rods **V** and replace them with Screws **O** Tighten clockwise until the mounting plate is secure.



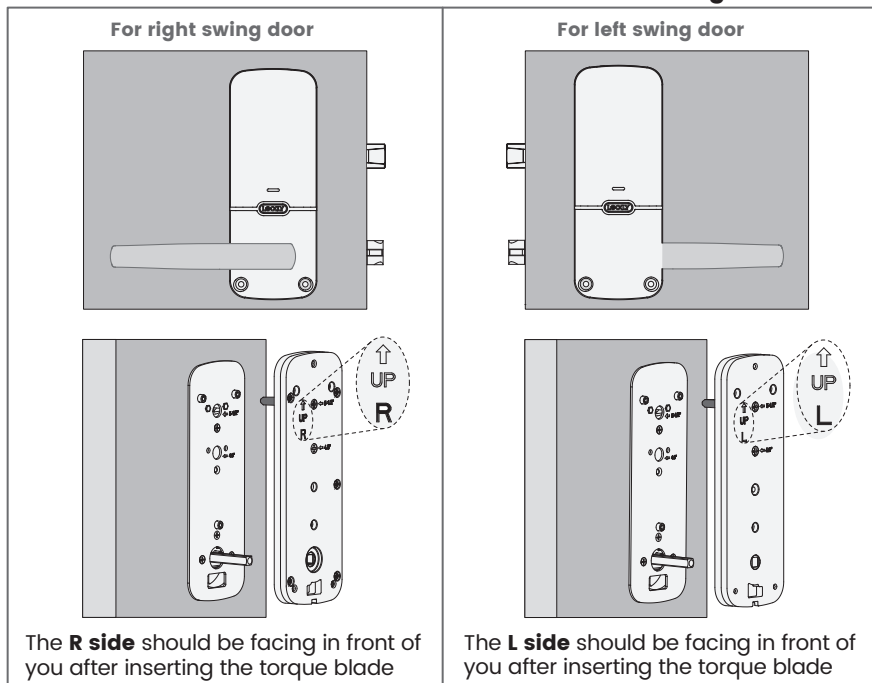
O1  KM4 x 25mm, for door thickness, 1 3/8"~1 2/3" (35~43mm)

O2  KM4 x 32mm, for door thickness, 1 2/3"~2" (43~50mm)

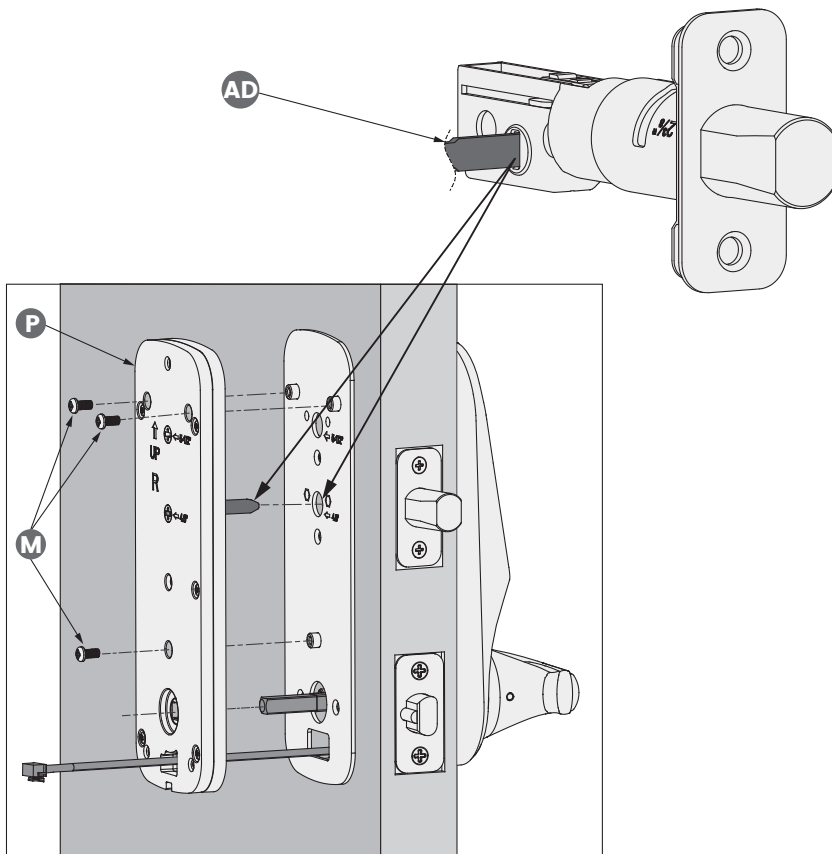
- 6** Select the side of the Interconnection Gear **P** according to door handle orientation **Left** or **Right**. Insert Torque Blade **AD** to plate according the distance between the latchbolt and deadbolt.



Select the correct side of the interconnection gear.

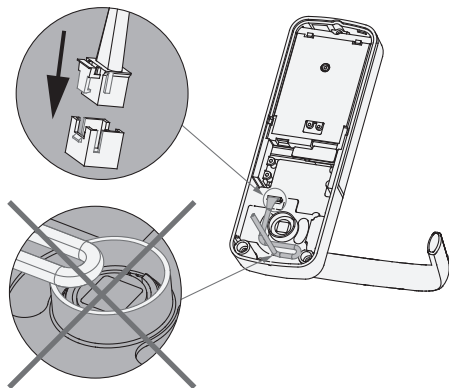


- 7 Install Interconnection Plate **P** onto door. Ensure the Torque Blade **AD** is inserted perpendicularly to the deadbolt. The spindle must pass through the plate. Secure the plate with Screws **M**.

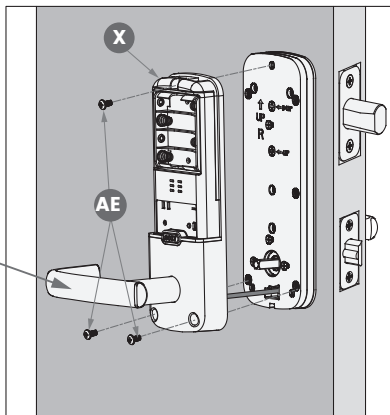


Step 6

INSTALLING INTERIOR ASSEMBLY (N)



Make sure the cable is away and not tangling with the Spindle **C**



Secure the lock interior with 3 screws **AE**

1

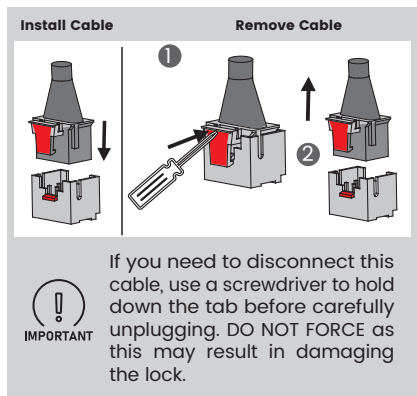
Plug the cable into the interior assembly of the lock making sure you match the red side on the plug with the red side on the lock. Secure the connection by ensuring that the connector is snapped in and inserted tightly.

2

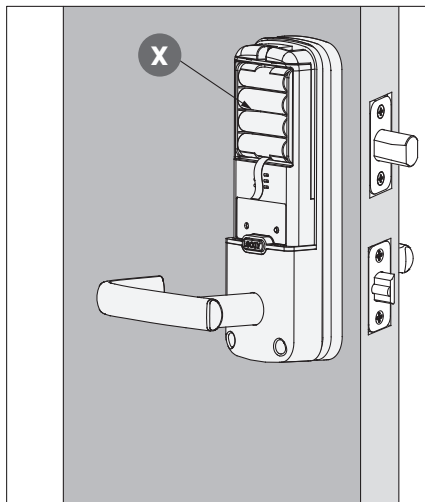
Align the Spindle **C** to the lock interior and attach the Interior lock to the interconnection plate.

Gently push some of the excess cable through the rectangular hole into the door.

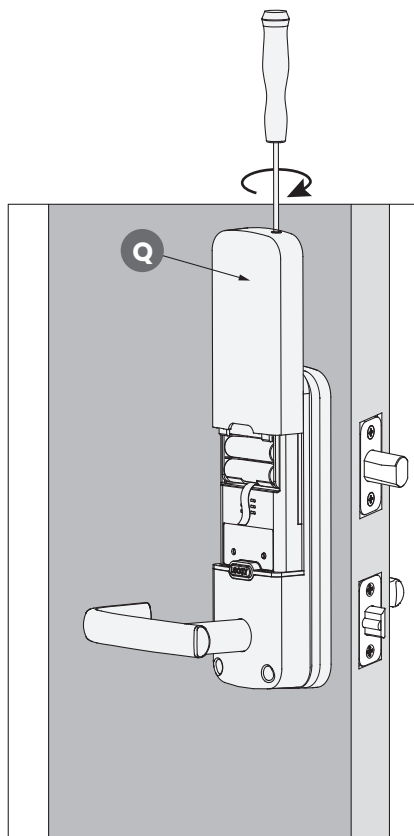
Place the remaining cable inside the interior assembly and ensure it sits securely onto the interconnection plate gear.



- 3 Insert 4 AA batteries into the lock by aligning the positive (+) and negative (-) markings on the batteries to the battery chamber.



- 4 Secure the battery by sliding the Battery Cover **Q** over the lock and turning the screw clockwise on top until tight.

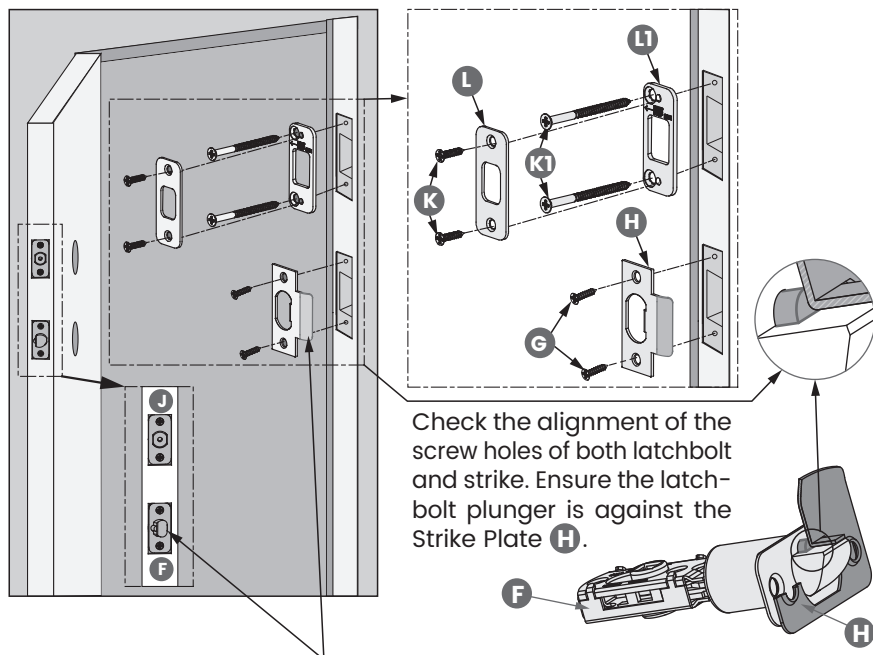


Step 7

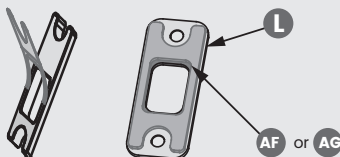
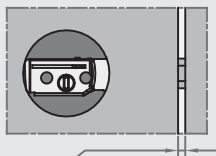
INSTALLING THE DOOR STRIKE

Using the strike plate spacer on the door frame is crucial for a proper fit.

We recommend the included strike plate, but if your existing one works smoothly without binding, you can use it instead. Just make sure both the deadbolt and latchbolt operate freely.



Make sure the slanted side of Latchbolt **F** is closing against the slanted part of Strike Plate **H** before fixing it on to door frame.



Important: Before installing the strike plate, ensure the gap between the door and frame is less than 4.5mm. If the gap is too wide, use the **AF** (2mm) or **AG** (3mm) spacer to reduce it. This will ensure the deadbolt extends properly through the strike plate for maximum security.

Congratulations! You have completed the Lockly Guard™ Duo (679D) smart lock installation. To complete your setup, download the Lockly Manager app from the iOS or Google Play Store and follow on-screen instructions.

**Scan or visit
[Locklypro.com/app](https://locklypro.com/app)**



FCC Warning:

This device complies with Part 15 of the FCC Rules. Operation is subject to the following two conditions: (1) This device may not cause harmful interference, and (2) this device must accept any interference received, including interference that may cause undesired operation.

NOTE 1: This equipment has been tested and found to comply with the limits for a Class B digital device, pursuant to part 15 of the FCC Rules. These limits are designed to provide reasonable protection against harmful interference in a residential installation. This equipment generates, uses and can radiate radio frequency energy and, if not installed and used in accordance with the instructions, may cause harmful interference to radio communications. However, there is no guarantee that interference will not occur in a particular installation. If this equipment does cause harmful interference to radio or television reception, which can be determined by turning the equipment off and on, the user is encouraged to try to correct the interference by one or more of the following measures:

- Reorient or relocate the receiving antenna.
- Increase the separation between the equipment and receiver.
- Connect the equipment into an outlet on a circuit different from that to which the receiver is connected.
- Consult the dealer or an experienced radio/TV technician for help.

NOTE 2: Any changes or modifications to this unit not expressly approved by the party responsible for compliance could void the user's authority to operate the equipment.

FCC Radiation Exposure Statement

This equipment complies with FCC radiation exposure limits set forth for an uncontrolled environment. It should be installed and operated with minimum distance 20cm between the radiator & your body.

IC WARNING

This equipment contains licence-exempt transmitter(s) that comply with Innovation, Science and Economic Development Canada's licence-exempt RSS(s). Operation is subject to the following two conditions:

- (1) This device may not cause interference.
- (2) This device must accept any interference, including interference that may cause undesired operation of the device.

L'émetteur/récepteur exempt de licence contenu dans le présent appareil est conforme aux CNR d'Innovation, Sciences et Développement économique Canada applicables aux appareils radio exempts de licence. L'exploitation est autorisée aux deux conditions suivantes:

1. L'appareil ne doit pas produire de brouillage;
2. L'appareil doit accepter tout brouillage radioélectrique subi, même si le brouillage est susceptible d'en compromettre le fonctionnement.

IC Radiation Exposure Statement

This equipment meets the exemption from the routine evaluation limits in section 2.5 of RSS-102. It should be installed and operated with a minimum distance of 20cm between the radiator and any part of your body.

Cet équipement est conforme à l'exemption des limites d'évaluation habituelle de la section 2.5 de la norme RSS-102. Il doit être installé et utilisé à une distance minimale de 20 cm entre le radiateur et toute partie de votre corps.



WARNING: Cancer risk from exposure to Lead. See www.P65Warnings.ca.gov.

WAIT.

IMPORTANT NOTES



- **Lockly Guard** installs differently from other door locks. Professional installer(s) and locksmiths must read and follow Lockly Guard installation and user manuals to prevent damaging the product. Failure to do so may also result in the smart lock not responding correctly to lock and unlocking commands and will require re-installation.
- This product is recommended for residential use. Please check your office building or property management policies and regulations before installation.

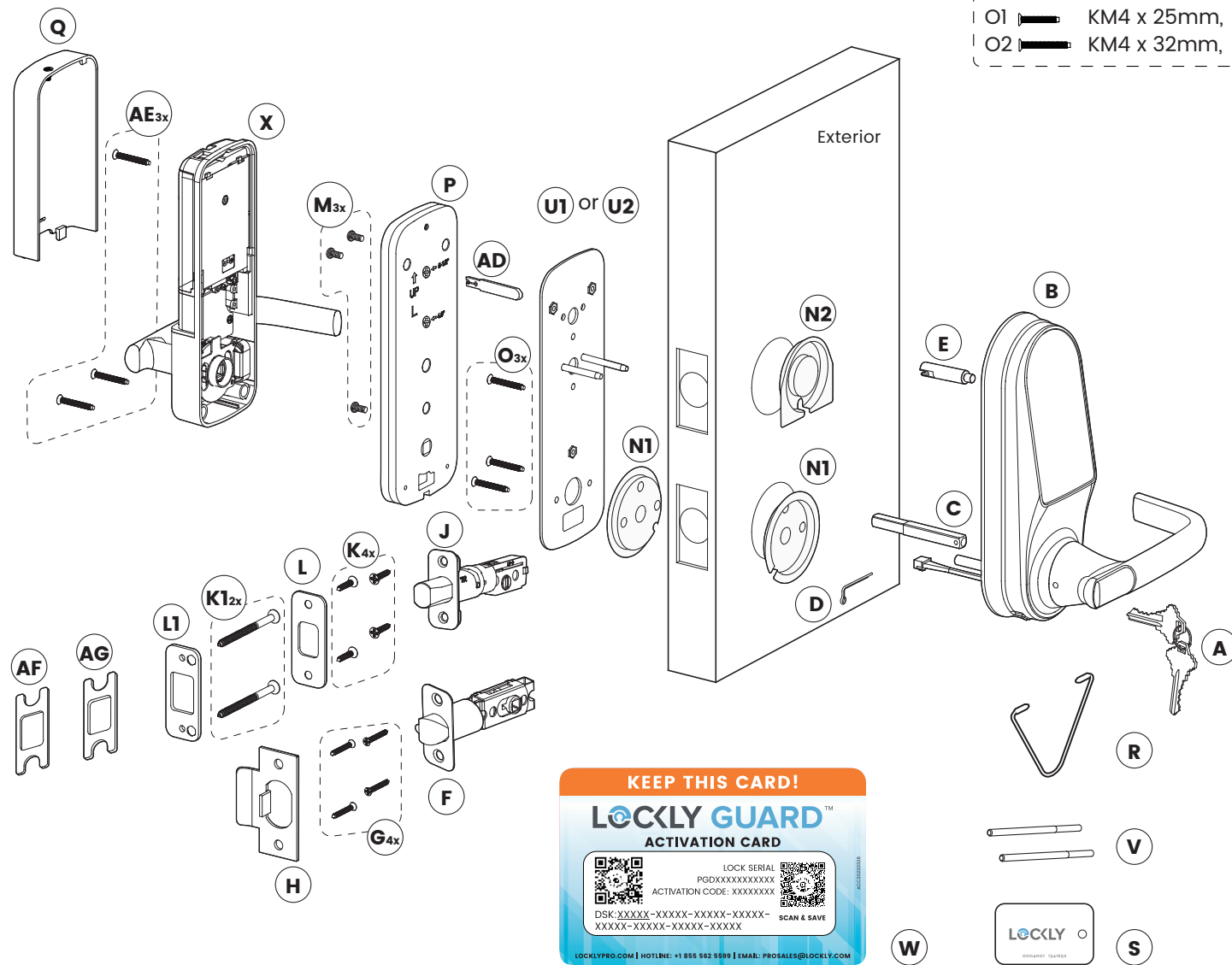
DO NOT RETURN to the stores. Please call our customer care team: (510) 288-9928 to help you with any issues or concerns you might have.

LOCKLY GUARD™

INSTALLATION OVERVIEW & PARTS LIST

This lock can be installed for both right swing and left swing doors. The lock ships ready for a right swing door installation. If you wish to change the orientation of the lock for a Left Swing door, follow instructions on Installation Guide **(Step 2)**.

- O1
- 
- KM4 x 25mm, for door thickness, 1 3/8" ~ 1 2/3" (35~43mm)
- O2
- 
- KM4 x 32mm, for door thickness, 1 2/3" ~ 2" (43~50mm)

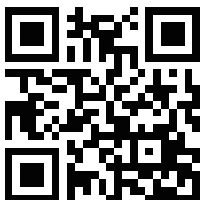


Parts List

Labeled As	Description
A	Keys
B	Exterior Assembly
C	Spindle
D	Locking Pin
E	Slotted Barrel Extension
F	Latch
G	KA4 x 20mm Screw
H	Latchbolt Strike Plate
J	Deadbolt
K	KA4 x 20mm Screw
L	Deadbolt Strike Plate
M	PM5 Screw
O	KM4 Screw
P	Interconnection Plate
Q	Battery Cover
R	Clamping Tool
S	RFID Card
U	Interior Mounting Plate
V	Positioning Rod
W	Activation Card
X	Interior Assembly
AD	Torque Blade
AE	BM4 × 24MM Screw
AF	2MM Strike Plate Spacer (optional)
AG	3MM Strike Plate Spacer (optional)
K1	ST5 x 70mm Screw
L1	Strike Plate Reinforcer
N1	Fire Shield
N2	Fire Shield



FOR COMMERCIAL USE & PROFESSIONAL INSTALLATION



We're Here to Help!
prosales@lockly.com
locklypro.com/support

© Copyright 2025 Lockly All rights reserved

Patent No. US 9,881,146 B2 | US 9,853,815 B2 | US 9,665,706 B2 | More patents refer to <https://lockly.com/pages/our-patents>

The Bluetooth® word mark and logos are registered trademarks owned by the Bluetooth SIG, Inc., and any use of such marks by Lockly is under license. Other trademarks and trade names are those of their respective owners. Google, Android and Google Play are trademarks of Google LLC.